

LCLAT1 Polyclonal Antibody

Catalog: BS65808	Host: Rabbit	Reactivity: Hu- man, Mouse, Rat, Dog, Cow, Horse, Rabbit, Sheep,
------------------	--------------	--

BackGround:

Acyl-CoA:lysocardiolipin acyltransferase. Possesses both lysophosphatidylinositol acyltransferase (LPIAT) and lysophosphatidylglycerol acyltransferase (LPGAT) activities. Recognizes both monolysocardiolipin and dilysocardiolipin as substrates with a preference for linoleoyl-CoA and oleoyl-CoA as acyl donors. Acts as a remodeling enzyme for cardiolipin, a major membrane polyglycerophospholipid. Converts lysophosphatidic acid (LPA) into phosphatidic acid (PA) with a relatively low activity. Required for establishment of the hematopoietic and endothelial lineages.

Product:

0.01M TBS(pH7.4) with 1% BSA, 0.03% Proclin300 and 50% Glycerol.

Molecular Weight:

~49 kDa

Swiss-Prot:

Q6UWP7

Purification&Purity:

affinity purified by Protein A

Applications:

WB=1:500-2000

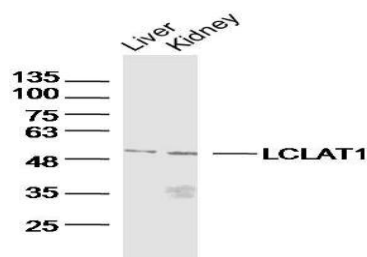
Storage&Stability:

Store at 4 °C short term. Aliquot and store at -19 °C long term. Avoid freeze-thaw cycles.

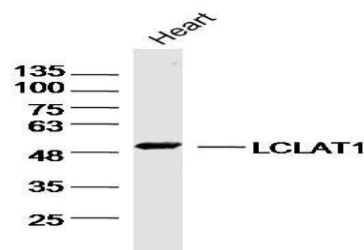
Specificity:

LCLAT1 Polyclonal Antibody detects endogenous levels of LCLAT1 protein.

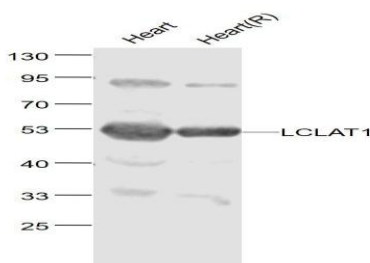
DATA:



Primary: Anti-LCLAT1 at 1/300 dilution



Primary: Anti-LCLAT1 at 1/300 dilution



Primary: Anti-LCLAT1 at 1/1000 dilution

Note:

For research use only, not for use in diagnostic procedure.

Bioworld Technology, Inc.

Add: 1660 South Highway 100, Suite 500 St. Louis Park, MN 55416, USA.

Email: info@bioworld.com

Tel: 6123263284

Fax: 6122933841

Bioworld technology, co. Ltd.

Add: No 9, weidi road Qixia District Nanjing, 210046, P. R. China.

Email: info@biogot.com

Tel: 0086-025-68037686

Fax: 0086-025-68035151