

TOB Polyclonal Antibody

Catalog: BS65806	Host: Rabbit	Reactivity: Hu-man, Mouse, Rat, Chicken, Dog, Pig, Cow, Horse, Rabbit, Sheep,
------------------	--------------	---

BackGround:

This gene encodes a member of the transducer of erbB-2 /B-cell translocation gene protein family. Members of this family are anti-proliferative factors that have the potential to regulate cell growth. The encoded protein may function as a tumor suppressor. Alternate splicing results in multiple transcript variants. [provided by RefSeq, Aug 2011]

Product:

0.01M TBS(pH7.4) with 1% BSA, 0.03% Proclin300 and 50% Glycerol.

Molecular Weight:

~38 kDa

Swiss-Prot:

P50616

Purification&Purity:

affinity purified by Protein A

Applications:

IHC-P=1:100-500

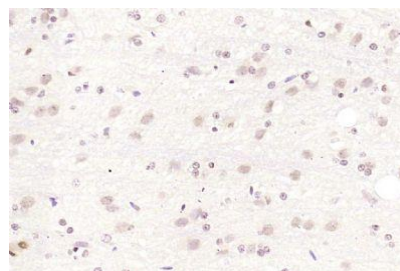
Storage&Stability:

Store at 4 °C short term. Aliquot and store at -21 °C long term. Avoid freeze-thaw cycles.

Specificity:

TOB Polyclonal Antibody detects endogenous levels of TOB protein.

DATA:



Paraformaldehyde-fixed, paraffin embedded (rat brain); Antigen retrieval by boiling in sodium citrate buffer (pH6.0) for 15min; Block endogenous peroxidase by 3% hydrogen peroxide for 20 minutes; Blocking buffer (normal goat serum) at 37 °C for 30min; Antibody incubation with (TOB) Polyclonal Antibody, Unconjugated at 1:200 overnight at 4 °C

Note:

For research use only, not for use in diagnostic procedure.

Bioworld Technology, Inc.

Add: 1660 South Highway 100, Suite 500 St. Louis Park, MN 55416, USA.

Email: info@bioworld.com

Tel: 6123263284

Fax: 6122933841

Bioworld technology, co. Ltd.

Add: No 9, weidi road Qixia District Nanjing, 210046, P. R. China.

Email: info@biogot.com

Tel: 0086-025-68037686

Fax: 0086-025-68035151