

ERG/KCNH2 Polyclonal Antibody

Catalog: BS65805	Host: Rabbit	Reactivity: Hu-man, Mouse, Rat, Dog, Pig, Horse, Rabbit,
------------------	--------------	--

BackGround:

The potassium voltage gated channel, subfamily H (eag related), member 2 (KCNH2) gene encodes a voltage-gated potassium channel which has an important role in cardiac action potential repolarization in the mammalian heart. Mutations in KCNH2 have been shown to cause chromosome 7-linked congenital long QT syndrome, a disorder associated with delayed cardiac repolarization, prolonged electrocardiographic QT intervals, and the development of ventricular arrhythmias. KCNH2 channels are an important target for many drugs, and have emerged as a significant type of cardiac ion channel. Highly expressed in heart and brain.

Product:

0.01M TBS(pH7.4) with 1% BSA, 0.03% Proclin300 and 50% Glycerol.

Molecular Weight:

~127 kDa

Swiss-Prot:

Q12809

Purification&Purity:

affinity purified by Protein A

Applications:

ICC=1:100-500

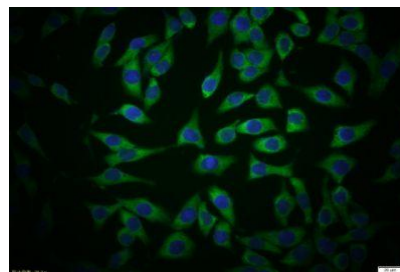
Storage&Stability:

Store at 4 °C short term. Aliquot and store at -22 °C long term. Avoid freeze-thaw cycles.

Specificity:

ERG/KCNH2 Polyclonal Antibody detects endogenous levels of ERG/KCNH2 protein.

DATA:



Tissue/cell: MCF-7 cell; 4% Paraformaldehyde-fixed; Triton X-100 at room temperature for 20 min; Blocking buffer (normal goat serum, C-0005) at 37 °C for 20 min; Antibody incubation with (ERG/KCNH2) Polyclonal Antibody, Unconjugated 1:100, 90 minutes at 37 °C; followed by a conjugated Goat Anti-Rabbit IgG antibody at 37 °C for 90 minutes, DAPI (5ug/ml, blue, C-0033) was used to stain the cell nuclei.

Note:

For research use only, not for use in diagnostic procedure.

Bioworld Technology, Inc.

Add: 1660 South Highway 100, Suite 500 St. Louis Park, MN 55416, USA.

Email: info@bioworld.com

Tel: 6123263284

Fax: 6122933841

Bioworld technology, co. Ltd.

Add: No 9, weidi road Qixia District Nanjing, 210046, P. R. China.

Email: info@biogot.com

Tel: 0086-025-68037686

Fax: 0086-025-68035151