

## MRPL20 Polyclonal Antibody

Catalog: BS65803	Host: Rabbit	Reactivity: Hu- man, Mouse, Rat, Chicken, Dog, Cow, Horse, Sheep,
------------------	--------------	--

### BackGround:

Mammalian mitochondrial ribosomal proteins are encoded by nuclear genes and help in protein synthesis within the mitochondrion. Mitochondrial ribosomes (mitoribosomes) consist of a small 28S subunit and a large 39S subunit. They have an estimated 75% protein to rRNA composition compared to prokaryotic ribosomes, where this ratio is reversed. Another difference between mammalian mitoribosomes and prokaryotic ribosomes is that the latter contain a 5S rRNA. Among different species, the proteins comprising the mitoribosome differ greatly in sequence, and sometimes in biochemical properties, which prevents easy recognition by sequence homology. This gene encodes a 39S subunit protein. A pseudogene corresponding to this gene is found on chromosome 21q. [provided by RefSeq, Jul 2008]

### Product:

0.01M TBS(pH7.4) with 1% BSA, 0.03% Proclin300 and 50% Glycerol.

### Molecular Weight:

~12 kDa

### Swiss-Prot:

Q9BYC9

### Purification&Purity:

affinity purified by Protein A

### Applications:

IHC-P=1:100-500

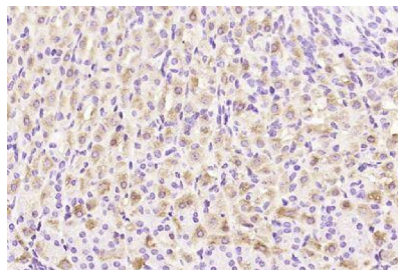
### Storage&Stability:

Store at 4 °C short term. Aliquot and store at -24 °C long term. Avoid freeze-thaw cycles.

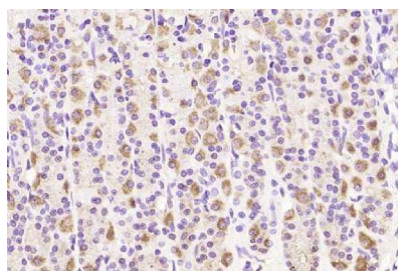
### Specificity:

MRPL20 Polyclonal Antibody detects endogenous levels of MRPL20 protein.

### DATA:



Paraformaldehyde-fixed, paraffin embedded (mouse stomach); Antigen retrieval by boiling in sodium citrate buffer (pH6.0) for 15min; Block endogenous peroxidase by 3% hydrogen peroxide for 20 minutes; Blocking buffer (normal goat serum) at 37 °C for 30min; Antibody incubation with (MRPL20) Polyclonal Antibody, Unconjugated at 1:200 overnight at 4 °C



Paraformaldehyde-fixed, paraffin embedded (rat stomach); Antigen retrieval by boiling in sodium citrate buffer (pH6.0) for 15min; Block endogenous peroxidase by 3% hydrogen peroxide for 20 minutes; Blocking buffer (normal goat serum) at 37 °C for 30min; Antibody incubation with (MRPL20) Polyclonal Antibody, Unconjugated at 1:200 overnight at 4 °C

### Note:

For research use only, not for use in diagnostic procedure.

### Bioworld Technology, Inc.

Add: 1660 South Highway 100, Suite 500 St. Louis Park, MN 55416, USA.

Email: [info@bioworld.com](mailto:info@bioworld.com)

Tel: 6123263284

Fax: 6122933841

### Bioworld technology, co. Ltd.

Add: No 9, weidi road Qixia District Nanjing, 210046, P. R. China.

Email: [info@biogot.com](mailto:info@biogot.com)

Tel: 0086-025-68037686

Fax: 0086-025-68035151