

Dopamine D5 receptor Polyclonal Antibody

Catalog: BS65799

Host: Rabbit

Reactivity: Human, Mouse, Rat,

BackGround:

This is one of the five types (D1 to D5) of receptors for dopamine. The activity of this receptor is mediated by G proteins which activate adenylyl cyclase. This receptor is neuron specific, localized primarily within limbic regions of the brain. Defects in DRD5 are a cause of blepharospasm and may be a cause of schizophrenia.

Product:

0.01M TBS(pH7.4) with 1% BSA, 0.03% Proclin300 and 50% Glycerol.

Molecular Weight:

~53 kDa

Swiss-Prot:

P25115

Purification&Purity:

affinity purified by Protein A

Applications:

WB=1:500-2000

Storage&Stability:

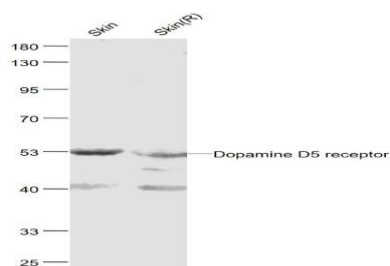
Store at 4 °C short term. Aliquot and store at -28 °C long term. Avoid freeze-thaw cycles.

Specificity:

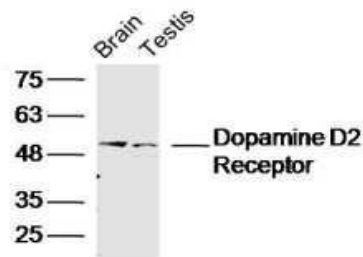
Dopamine D5 receptor Polyclonal Antibody detects

endogenous levels of Dopamine D5 receptor protein.

DATA:



Primary: Anti-Dopamine D5 receptor at 1/300 dilution



Primary: Anti- Dopamine D5 receptor at 1/300 dilution

Note:

For research use only, not for use in diagnostic procedure.

Bioworld Technology, Inc.

Add: 1660 South Highway 100, Suite 500 St. Louis Park, MN 55416, USA.

Email: info@bioworld.com

Tel: 6123263284

Fax: 6122933841

Bioworld technology, co. Ltd.

Add: No 9, weidi road Qixia District Nanjing, 210046, P. R. China.

Email: info@biogot.com

Tel: 0086-025-68037686

Fax: 0086-025-68035151