

C4orf21 Polyclonal Antibody

Catalog: BS65783

Host: Rabbit

Reactivity: Human, Mouse, Rat, Cow, Horse,

BackGround:

C4orf12 (chromosome 4 open reading frame 12) is a 926 amino acid single-pass membrane protein that exists as two isoforms. The gene encoding C4orf21 maps to human chromosome 4. Human chromosome 4 represents approximately 6% of the human genome and contains nearly 900 genes. Notably, the Huntingtin gene, which is found to encode an expanded glutamine tract in cases of Huntington's disease, is on chromosome 4. FGFR-3 is also encoded by a gene that is located on chromosome 4, and has been associated with thanatophoric dwarfism, achondroplasia, Muenke syndrome and bladder cancer. Chromosome 4 is also tied to Ellis-van Creveld syndrome, methylmalonic acidemia and polycystic kidney disease.

Product:

0.01M TBS(pH7.4) with 1% BSA, 0.03% Proclin300 and 50% Glycerol.

Molecular Weight:

119 kD

Swiss-Prot:

Q86YA3

Purification&Purity:

affinity purified by Protein A

Applications:

WB=1:500-2000

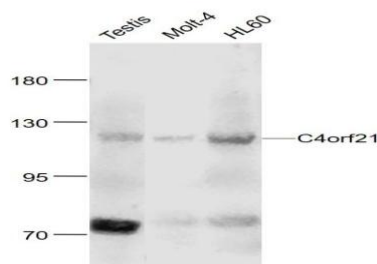
Storage&Stability:

Store at 4 °C short term. Aliquot and store at -20 °C long term. Avoid freeze-thaw cycles.

Specificity:

C4orf21 Polyclonal Antibody detects endogenous levels of C4orf21 protein.

DATA:



Primary: Anti- C4orf21 at 1/1000 dilution

Note:

For research use only, not for use in diagnostic procedure.

Bioworld Technology, Inc.

Add: 1660 South Highway 100, Suite 500 St. Louis Park, MN 55416, USA.

Email: info@bioworld.com

Tel: 6123263284

Fax: 6122933841

Bioworld technology, co. Ltd.

Add: No 9, weidi road Qixia District Nanjing, 210046, P. R. China.

Email: info@biogol.com

Tel: 0086-025-68037686

Fax: 0086-025-68035151