

CRB2 Polyclonal Antibody

Catalog: BS65770

Host: Rabbit

Reactivity: Human, Mouse, Rat,

BackGround:

CRB2 is a 1,285 amino acid protein that contains three laminin G-like domains and 15 EGF-like domains and exists as multiple alternatively spliced isoforms that are either secreted or membrane bound. Expressed in kidney and retina, as well as in fetal eye and brain, CRB2 is thought to play a role in the morphogenesis of polarized cells and may be involved in DNA repair. Defects in the gene encoding CRB2 are associated with the pathogenesis of autosomal recessive retinitis pigmentosa (RP) and Leber congenital amaurosis (LCA), the former of which refers to a group of diseases that lead to the degeneration of retinal photoreceptor cells, ultimately resulting in a loss of vision. The gene encoding CRB2 maps to human chromosome 9, which houses over 900 genes and comprises nearly 4% of the human genome.

Product:

0.01M TBS(pH7.4) with 1% BSA, 0.03% Proclin300 and 50% Glycerol.

Molecular Weight:

100,131 kD

Swiss-Prot:

Q5IJ48

Purification&Purity:

affinity purified by Protein A

Applications:

WB=1:500-2000

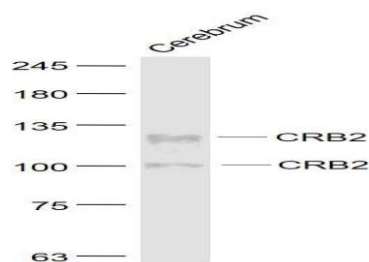
Storage&Stability:

Store at 4 °C short term. Aliquot and store at -20 °C long term. Avoid freeze-thaw cycles.

Specificity:

CRB2 Polyclonal Antibody detects endogenous levels of CRB2 protein.

DATA:



Primary: Anti- CRB2 at 1/1000 dilution

Note:

For research use only, not for use in diagnostic procedure.

Bioworld Technology, Inc.

Add: 1660 South Highway 100, Suite 500 St. Louis Park, MN 55416, USA.

Email: info@bioworld.com

Tel: 6123263284

Fax: 6122933841

Bioworld technology, co. Ltd.

Add: No 9, weidi road Qixia District Nanjing, 210046, P. R. China.

Email: info@biogot.com

Tel: 0086-025-68037686

Fax: 0086-025-68035151