

GPBP1 Polyclonal Antibody

Catalog: BS65762	Host: Rabbit	Reactivity: Hu- man, Mouse, Rat, Chicken, Dog, Pig, Cow, Horse, Sheep,
------------------	--------------	---

BackGround:

Vascular wall-linked protein, or Vasculin, is primarily expressed in the arterial wall and in plasma. It is also differentially expressed in human atherogenesis. Alternative splicing of exon 3 of the Vasculin gene produces three variants. Vasculin binds to and activates the minimal self-sufficient promoter element (MSPE) of the mouse Ada gene promoter and binds to and partially suppresses the GC-rich promoter of the nonhomologous human TOP2A gene promoter. It acts as a nuclear factor that can form complexes with TATA-binding proteins, transcription factors TFIIB and TFIIF, RNA polymerase II and p300. The regulated expression of Vasculin in plaques suggests that it may be involved in atherogenesis, and its presence in plasma may implicate Vasculin as a marker for atherosclerosis.

Product:

0.01M TBS(pH7.4) with 1% BSA, 0.03% Proclin300 and 50% Glycerol.

Molecular Weight:

53 kD

Swiss-Prot:

Q86WP2

Purification&Purity:

affinity purified by Protein A

Applications:

WB=1:500-2000

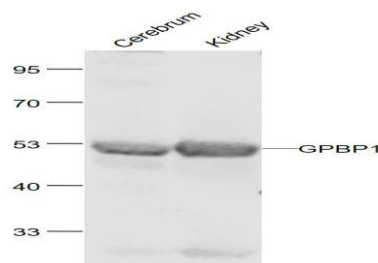
Storage&Stability:

Store at 4 °C short term. Aliquot and store at -20 °C long term. Avoid freeze-thaw cycles.

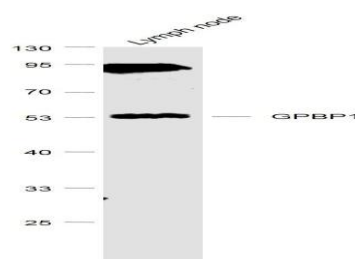
Specificity:

GPBP1 Polyclonal Antibody detects endogenous levels of GPBP1 protein.

DATA:



Primary: Anti-GPBP1 at 1/1000 dilution



Primary: Anti-GPBP1 at 1/1000 dilution

Note:

For research use only, not for use in diagnostic procedure.

Bioworld Technology, Inc.

Add: 1660 South Highway 100, Suite 500 St. Louis Park, MN 55416, USA.

Email: info@bioworld.com

Tel: 6123263284

Fax: 6122933841

Bioworld technology, co. Ltd.

Add: No 9, weidi road Qixia District Nanjing, 210046, P. R. China.

Email: info@biogot.com

Tel: 0086-025-68037686

Fax: 0086-025-68035151