

DBPA Polyclonal Antibody

Catalog: BS65741	Host: Rabbit	Reactivity: Hu-man, Mouse, Rat, Dog, Pig, Cow, Rabbit, Sheep,
------------------	--------------	---

BackGround:

CSDA is a 372 amino acid nuclear and cytoplasmic protein that is highly expressed in skeletal muscle and heart. Containing one CSD (cold-shock) domain, CSDA is thought to bind to GM-CSF promoter, full length mRNA and to short RNA sequences containing a specific consensus site. CSDA is suggested to have a role in translation repression and is found in a mRNP complex with MSY2. MSY2 belongs to the Y-box family of multifunctional proteins that regulate both transcription and translation. CSDA participates in promoting cell proliferation and expression of cyclin D1 and proliferating cell nuclear antigen (PCNA). CSDA is regarded to be an important component of the mechanisms that sense epithelial density and in regulating the switch between proliferation and differentiation through complex transcriptional networks.

Product:

0.01M TBS(pH7.4) with 1% BSA, 0.03% Proclin300 and 50% Glycerol.

Molecular Weight:

40 kD

Swiss-Prot:

P16989

Purification&Purity:

affinity purified by Protein A

Applications:

WB=1:500-2000

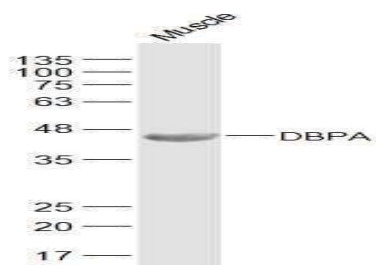
Storage&Stability:

Store at 4 °C short term. Aliquot and store at -20 °C long term. Avoid freeze-thaw cycles.

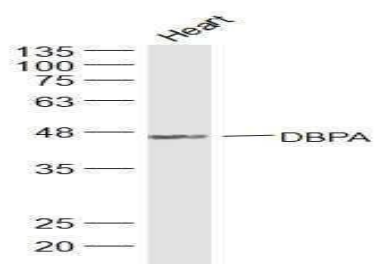
Specificity:

DBPA Polyclonal Antibody detects endogenous levels of DBPA protein.

DATA:



Primary: Anti-DBPA at 1/500 dilution



Primary: Anti-DBPA at 1/500 dilution

Note:

For research use only, not for use in diagnostic procedure.

Bioworld Technology, Inc.

Add: 1660 South Highway 100, Suite 500 St. Louis Park, MN 55416, USA.

Email: info@bioworld.com

Tel: 6123263284

Fax: 6122933841

Bioworld technology, co. Ltd.

Add: No 9, weidi road Qixia District Nanjing, 210046, P. R. China.

Email: info@biogot.com

Tel: 0086-025-68037686

Fax: 0086-025-68035151