

## FLVCR Polyclonal Antibody

|                  |              |  |
|------------------|--------------|--|
| Catalog: BS65722 | Host: Rabbit | Reactivity: Hu-<br>man, Mouse, Rat, Chicken, Pig, Horse, |
|------------------|--------------|--|

### BackGround:

FLVCR is responsible for the exportation of cytoplasmic heme groups. It is believed that it may protect developing erythroid cells from heme toxicity. Expression of FLVCR in cells will cause susceptibility to FeLV-C (Feline leukemia virus subgroup C) in vitro. FLVCR is found in all hematopoietic tissues, including peripheral blood lymphocytes and fetal liver, and some expression is found in pancreas and kidney. It is down-regulated in haemopoietic progenitor cells undergoing differentiation and hemoglobinization.

### Product:

0.01M TBS(pH7.4) with 1% BSA, 0.03% Proclin300 and 50% Glycerol.

### Molecular Weight:

60 kD

### Swiss-Prot:

Q9Y5Y0

### Purification&Purity:

affinity purified by Protein A

### Applications:

IHC-P=1:100-500

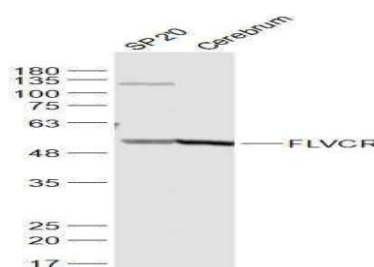
### Storage&Stability:

Store at 4 °C short term. Aliquot and store at -20 °C long term. Avoid freeze-thaw cycles.

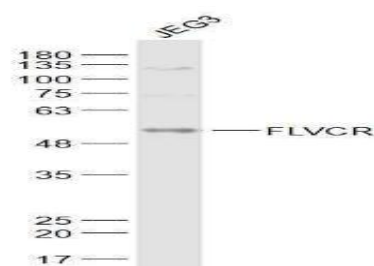
### Specificity:

FLVCR Polyclonal Antibody detects endogenous levels of FLVCR protein.

### DATA:



Primary: Anti-FLVCR at 1/1000 dilution



Primary: Anti-FLVCR at 1/1000 dilution

### Note:

For research use only, not for use in diagnostic procedure.

### Bioworld Technology, Inc.

Add: 1660 South Highway 100, Suite 500 St. Louis Park,

MN 55416, USA.

Email: [info@bioworld.com](mailto:info@bioworld.com)

Tel: 6123263284

Fax: 6122933841

### Bioworld technology, co. Ltd.

Add: No 9, weidi road Qixia District Nanjing, 210046, P. R. China.

Email: [info@biogot.com](mailto:info@biogot.com)

Tel: 0086-025-68037686

Fax: 0086-025-68035151