

Chordin Polyclonal Antibody

Catalog: BS65703	Host: Rabbit	Reactivity: Hu- man, Mouse, Rat, Dog, Pig, Cow, Horse, Rabbit, Sheep,
------------------	--------------	--

BackGround:

The patterning of the CNS relies on the interaction of multiple signaling molecules such as Sonic Hedgehog, Wnts, and BMPs and their antagonists Chordin and Noggin. At midgastrula, expression of Noggin overlaps that of Chordin. Chordin is a key developmental protein that dorsalizes early vertebrate embryonic tissues by binding to ventralizing TGF-beta-like bone morphogenetic proteins and sequestering them in latent complexes. The gene which encodes chordin maps to human chromosome 3q27. Noggin is a secreted protein that binds and inactivates members of the transforming growth factor-beta (TGF-beta) superfamily of signaling proteins, such as BMP-2,4,7. The gene which encodes noggin maps to human chromosome 17q22.

Product:

0.01M TBS(pH7.4) with 1% BSA, 0.03% Proclin300 and 50% Glycerol.

Molecular Weight:

99kDa

Swiss-Prot:

Q9H2X0

Purification&Purity:

affinity purified by Protein A

Applications:

WB=1:500-2000

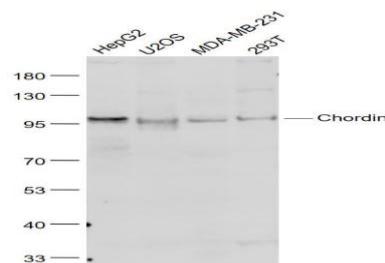
Storage&Stability:

Store at 4 °C short term. Aliquot and store at -20 °C long term. Avoid freeze-thaw cycles.

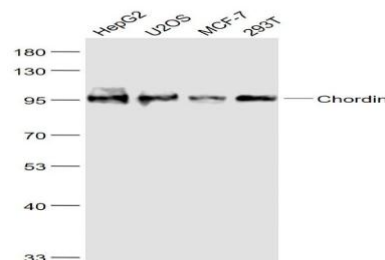
Specificity:

Chordin Polyclonal Antibody detects endogenous levels of Chordin protein.

DATA:



Primary: Anti- Chordin at 1/1000 dilution



Primary: Anti- Chordin at 1/1000 dilution

Note:

For research use only, not for use in diagnostic procedure.

Bioworld Technology, Inc.

Add: 1660 South Highway 100, Suite 500 St. Louis Park, MN 55416, USA.

Email: info@bioworld.com

Tel: 6123263284

Fax: 6122933841

Bioworld technology, co. Ltd.

Add: No 9, weidi road Qixia District Nanjing, 210046, P. R. China.

Email: info@biogot.com

Tel: 0086-025-68037686

Fax: 0086-025-68035151