

CLACP Polyclonal Antibody

Catalog: BS65697	Host: Rabbit	Reactivity: Hu- man, Mouse, Rat, Chicken, Dog, Cow, Horse, Sheep,
------------------	--------------	--

BackGround:

Collagen proteins (products of the COL gene family) are fibrous, extracellular matrix proteins with high tensile strength and are the major components of connective tissue such as tendons and cartilage. All collagens contain a triple helix domain and frequently show lateral self-association in order to form complex connective tissues. The Collagen Type XXV precursor produces the proteolytic fragment CLAC (collagenous Alzheimer amyloid plaque component), which deposits in senile plaques associated with amyloid beta peptides (Abeta) in the brains of patients with Alzheimer's disease. CLAC binds to the fibrillized form of Abeta, which disturbs the structure and function of plasma membranes.

Product:

0.01M TBS(pH7.4) with 1% BSA, 0.03% Proclin300 and 50% Glycerol.

Molecular Weight:

57 kD

Swiss-Prot:

Q9BXS0

Purification&Purity:

affinity purified by Protein A

Applications:

WB=1:500-2000

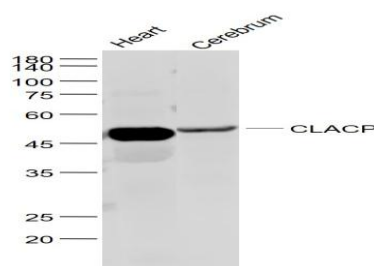
Storage&Stability:

Store at 4 °C short term. Aliquot and store at -20 °C long term. Avoid freeze-thaw cycles.

Specificity:

PSMD11 Polyclonal Antibody detects endogenous levels of PSMD11 protein.

DATA:



Primary: Anti- CLACP at 1/1000 dilution

Note:

For research use only, not for use in diagnostic procedure.

Bioworld Technology, Inc.

Add: 1660 South Highway 100, Suite 500 St. Louis Park, MN 55416, USA.

Email: info@bioworld.com

Tel: 6123263284

Fax: 6122933841

Bioworld technology, co. Ltd.

Add: No 9, weidi road Qixia District Nanjing, 210046, P. R. China.

Email: info@biogot.com

Tel: 0086-025-68037686

Fax: 0086-025-68035151