

LRP5L Polyclonal Antibody

Catalog: BS65694

Host: Rabbit

Reactivity: Human, Mouse, Rat, Chicken, Sheep,

Background:

Members of the LDL receptor gene family, including LDLR (low density lipoprotein receptor), LRP5 (low density lipoprotein related proteins), Megalin (also designated GP330), VLDLR (very low density lipoprotein receptor) and ApoER2, are characterized by a cluster of cysteine-rich class A repeats, epidermal growth factor (EGF)-like repeats, YWTD repeats and an O-linked sugar domain. Of the known family members, LRP5 is most closely related to LRP1. However, LRP5 has a unique organization of EGF and LDLR repeats compared to other LDLR family members and likely represents a new category in this family. LRP5 is expressed in rat tibia, specifically in areas of the bone that are involved in remodeling. LRP5 is a Wnt coreceptor that binds to Axin and regulates the canonical Wnt signaling pathway. LRP5 affects bone mass accrual during growth. Mutations in LRP5 cause the autosomal recessive disorder osteoporosis-pseudoglioma syndrome (OPPG). LRP5L is a related protein that exists as two isoforms produced by alternative splicing.

Product:

0.01M TBS(pH7.4) with 1% BSA, 0.03% Proclin300 and 50% Glycerol.

Molecular Weight:

28 kD

Swiss-Prot:

A4QPB2

Purification&Purity:

affinity purified by Protein A

Applications:

WB=1:500-2000

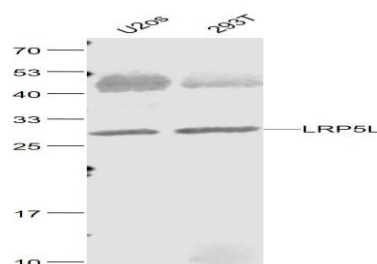
Storage&Stability:

Store at 4 °C short term. Aliquot and store at -20 °C long term. Avoid freeze-thaw cycles.

Specificity:

LRP5L Polyclonal Antibody detects endogenous levels of LRP5L protein.

DATA:

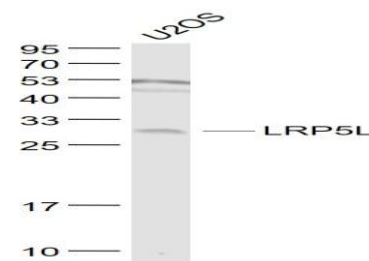


Sample:

U2os(Human) Cell Lysate at 30 ug

293T(Human) Cell Lysate at 30 ug

Primary: Anti-LRP5L at 1/1000 dilution



Sample:

U2OS(Human) Cell Lysate at 30 ug

Primary: Anti- LRP5L at 1/1000 dilution

Note:

For research use only, not for use in diagnostic procedure.

Bioworld Technology, Inc.

Add: 1660 South Highway 100, Suite 500 St. Louis Park, MN 55416, USA.

Email: info@bioworld.com

Tel: 6123263284

Fax: 6122933841

Bioworld technology, co. Ltd.

Add: No 9, weidi road Qixia District Nanjing, 210046, P. R. China.

Email: info@biogot.com

Tel: 0086-025-68037686

Fax: 0086-025-68035151