

## Ctip1 Polyclonal Antibody

Catalog: BS65690	Host: Rabbit	Reactivity: Human, Mouse, Rat, Chicken, Rabbit,
------------------	--------------	---

### BackGround:

This gene encodes a C2H2 type zinc-finger protein by its similarity to the mouse Bcl11a/Evi9 protein. The corresponding mouse gene is a common site of retroviral integration in myeloid leukemia, and may function as a leukemia disease gene, in part, through its interaction with BCL6. During hematopoietic cell differentiation, this gene is down-regulated. It is possibly involved in lymphoma pathogenesis since translocations associated with B-cell malignancies also deregulates its expression. Multiple transcript variants encoding several different isoforms have been found for this gene. [provided by RefSeq, Jul 2008].

### Product:

0.01M TBS(pH7.4) with 1% BSA, 0.03% Proclin300 and 50% Glycerol.

### Molecular Weight:

91 kD

### Swiss-Prot:

Q9H165

### Purification&Purity:

affinity purified by Protein A

### Applications:

WB=1:500-2000

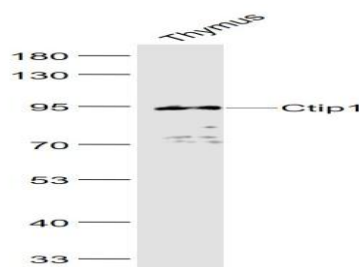
### Storage&Stability:

Store at 4 °C short term. Aliquot and store at -20 °C long term. Avoid freeze-thaw cycles.

### Specificity:

Ctip1 Polyclonal Antibody detects endogenous levels of Ctip1 protein.

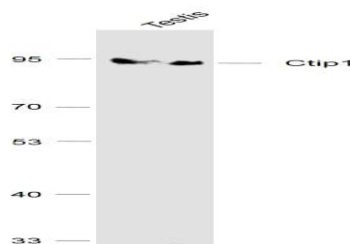
### DATA:



Sample:

Thymus (Mouse) Lysate at 40 ug

Primary: Anti-Ctip1 at 1/1000 dilution



Sample:

Testis (Mouse) Lysate at 40 ug

Primary: Anti-Ctip1 at 1/1000 dilution

### Note:

For research use only, not for use in diagnostic procedure.

### Bioworld Technology, Inc.

Add: 1660 South Highway 100, Suite 500 St. Louis Park, MN 55416, USA.

Email: [info@bioworld.com](mailto:info@bioworld.com)

Tel: 6123263284

Fax: 6122933841

### Bioworld technology, co. Ltd.

Add: No 9, weidi road Qixia District Nanjing, 210046, P. R. China.

Email: [info@biogot.com](mailto:info@biogot.com)

Tel: 0086-025-68037686

Fax: 0086-025-68035151