

Nova1 Polyclonal Antibody

Catalog: BS65682

Host: Rabbit

Reactivity: Human, Mouse, Rat, Chicken, Cow,

Background:

Nova-1 and Nova-2 are members of a superfamily of protein regulators of RNA metabolism in neurons. Both are nuclear RNA binding proteins with K homology motifs, conserved protein sequences which bind to RNA (1,2). Nova proteins, normally sequestered in the central nervous system, are expressed by systemic tumors in patients with the autoimmune disorder paraneoplastic opsoclonus-myoclonus ataxia (POMA) (3,4). Nova-1 is expressed in the hindbrain and ventral spinal cord and Nova-2 is expressed in the neocortex and hippocampus (4). Nova-1 is necessary for regulating neuron-specific alternative splicing of the glycine receptor Alpha2 pre-mRNA (5).

Product:

0.01M TBS(pH7.4) with 1% BSA, 0.03% Proclin300 and 50% Glycerol.

Molecular Weight:

52 kD

Swiss-Prot:

P51513

Purification&Purity:

affinity purified by Protein A

Applications:

WB=1:500-2000

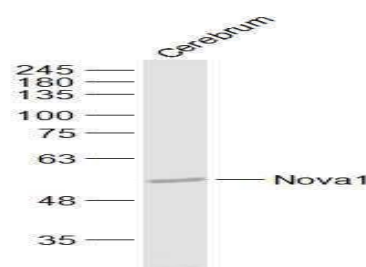
Storage&Stability:

Store at 4 °C short term. Aliquot and store at -20 °C long term. Avoid freeze-thaw cycles.

Specificity:

Nova1 Polyclonal Antibody detects endogenous levels of Nova1 protein.

DATA:

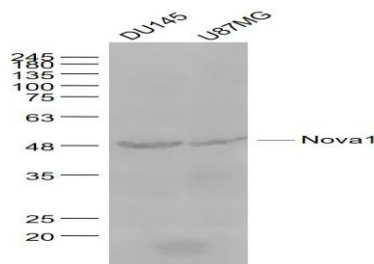


Sample:

Cerebrum (Mouse) Lysate at 40 ug

Cerebrum (Rat) Lysate at 40 ug

Primary: Anti-Nova1 at 1/1000 dilution



Sample:

DU145(Human) Cell Lysate at 30 ug

U87MG(Human) Cell Lysate at 30 ug

Primary: Anti- Nova1 at 1/1000 dilution

Note:

For research use only, not for use in diagnostic procedure.

Bioworld Technology, Inc.

Add: 1660 South Highway 100, Suite 500 St. Louis Park, MN 55416, USA.

Email: info@bioworld.com

Tel: 6123263284

Fax: 6122933841

Bioworld technology, co. Ltd.

Add: No 9, weidi road Qixia District Nanjing, 210046, P. R. China.

Email: info@biogot.com

Tel: 0086-025-68037686

Fax: 0086-025-68035151