



## NSF Polyclonal Antibody

Catalog: BS65677	Host: Rabbit	Reactivity: Hu- man, Mouse, Rat, Dog, Pig, Cow, Horse, Rabbit, Zebrafish, Sheep,
------------------	--------------	---

**BackGround:**

Several protein-protein interactions are essential to membrane fusion during endocytosis. Membrane fusion requires interaction among SNARE1 proteins associated with both donor and acceptor membranes (1,2). Following membrane fusion, the  $\alpha$ -SNAP cytoplasmic adapter protein binds to the SNARE complex. N-ethylmaleimide-sensitive factor (NSF), a hexameric ATPase, then associates with the  $\alpha$ -SNAP/SNARE complex to mediate SNARE disassembly during membrane fusion (3,4). The ATPase activity of NSF induces a conformational change in the  $\alpha$ -SNAP/SNARE complex that leads to its dissociation from the membrane, membrane fusion and eventual recycling of the SNARE complex for subsequent membrane fusion (3,4).

**Product:**

0.01M TBS(pH7.4) with 1% BSA, 0.03% Proclin300 and 50% Glycerol.

**Molecular Weight:**

83 kD

**Swiss-Prot:**

P46459

**Purification&Purity:**

affinity purified by Protein A

**Applications:**

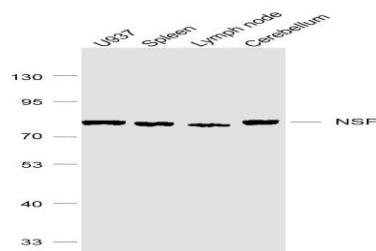
WB=1:500-2000

**Storage&Stability:**

Store at 4 °C short term. Aliquot and store at -20 °C long term. Avoid freeze-thaw cycles.

**Specificity:**

NSF Polyclonal Antibody detects endogenous levels of NSF protein.

**DATA:**

Sample:

U937 (Human) Cell Lysate at 30 ug

Spleen (Mouse) Lysate at 40 ug

Lymph node (Mouse) Lysate at 40 ug

Cerebellum (Mouse) Lysate at 40 ug

Primary: Anti-NSF at 1/1000 dilution

**Note:**

For research use only, not for use in diagnostic procedure.

**Bioworld Technology, Inc.**

Add: 1660 South Highway 100, Suite 500 St. Louis Park, MN 55416, USA.

Email: [info@bioworld.com](mailto:info@bioworld.com)

Tel: 6123263284

Fax: 6122933841

**Bioworld technology, co. Ltd.**

Add: No 9, weidi road Qixia District Nanjing, 210046, P. R. China.

Email: [info@biogot.com](mailto:info@biogot.com)

Tel: 0086-025-68037686

Fax: 0086-025-68035151