

GRAF Polyclonal Antibody

Catalog: BS65676	Host: Rabbit	Reactivity: Hu- man, Mouse, Rat, Chicken, Dog, Pig, Cow, Rabbit, Sheep,
------------------	--------------	--

BackGround:

Cellular signaling by G-proteins is down-regulated by GTPase-activating proteins (GAPs), which increase the rate of GTP hydrolysis. The GTPase regulator associated with focal adhesion kinase (GRAF) has GAP activity toward Rho A and Cdc42, but not Rac1. GRAF is ubiquitously expressed with high levels in heart and brain. Expression of GRAF causes clearing of stress fibers and formation of long actin based filopodial-like extensions. Fusion of MLL with GRAF, MLL/GRAF, is included in a rare genetic subgroup of acute myeloid leukemia (AML) cases.

Product:

0.01M TBS(pH7.4) with 1% BSA, 0.03% Proclin300 and 50% Glycerol.

Molecular Weight:

38 kD

Swiss-Prot:

Q9UNA1

Purification&Purity:

affinity purified by Protein A

Applications:

WB=1:500-2000

Storage&Stability:

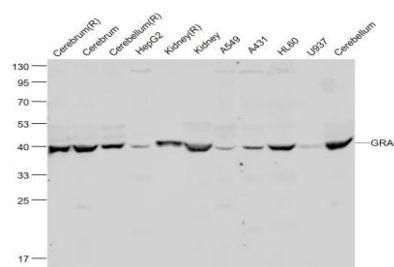
Store at 4 °C short term. Aliquot and store at -20 °C long term. Avoid freeze-thaw cycles.

Specificity:

GRAF Polyclonal Antibody detects endogenous levels of

GRAF protein.

DATA:



Sample:

Cerebrum(Rat) Lysate at 40 ug

Cerebrum(Mouse) Lysate at 40 ug

Cerebellum(Rat) Lysate at 40 ug

HepG2(Human) Cell Lysate at 30 ug

Kidney(Rat) Lysate at 40 ug

Kidney(Mouse) Lysate at 40 ug

A549(Human) Cell Lysate at 30 ug

A431(Human) Cell Lysate at 30 ug

HL60(Human) Cell Lysate at 30 ug

U937(Human) Cell Lysate at 30 ug

Cerebellum(Mouse) Lysate at 40 ug

Primary: Anti-GRAF at 1/1000 dilution

Note:

For research use only, not for use in diagnostic procedure.

Bioworld Technology, Inc.

Add: 1660 South Highway 100, Suite 500 St. Louis Park, MN 55416, USA.

Email: info@bioworld.com

Tel: 6123263284

Fax: 6122933841

Bioworld technology, co. Ltd.

Add: No 9, weidi road Qixia District Nanjing, 210046, P. R. China.

Email: info@biogol.com

Tel: 0086-025-68037686

Fax: 0086-025-68035151