

C1QL1 Polyclonal Antibody

Catalog: BS65664

Host: Rabbit

Reactivity: Human, Mouse, Rat, Dog, Pig, Cow,

BackGround:

C1q is part of the C1 enzyme complex, which activates the serum complement system. The residues of the globular domain in C1q share homology with several other secreted and membrane-bound collagen or collagen-like proteins, including pre-cerebellin and collagen types VIII and X, as well as the human and mouse genes encoding Apm1/BPB80 and AdipoQ/ACRP30, respectively. These various C1q-related proteins are found in adipose serum, corneal endothelium, chondrocytes and cerebral Purkinje cells. C1qL1 (complement component 1, q subcomponent-like 1), also known as CRF or C1QRF, is a polypeptide with a hydrophobic signal sequence, a collagenous region and a globular domain at the carboxy terminus, which shares homology to the C1q globular domain. C1qL1 transcripts are most abundant in areas of the nervous system that are associated with motor function, including cerebral Purkinje cells, the pons, the accessory olivary nucleus, and the red nucleus. The similarity of mouse C1qL1 to human C1qL1 suggests a conserved and important role for the protein. In humans, the gene encoding C1qL1 maps to chromosome 17q21.

Product:

0.01M TBS(pH7.4) with 1% BSA, 0.03% Proclin300 and 50% Glycerol.

Molecular Weight:

25kD

Swiss-Prot:

O75973

Purification&Purity:

affinity purified by Protein A

Applications:

IHC-P=1:100-500

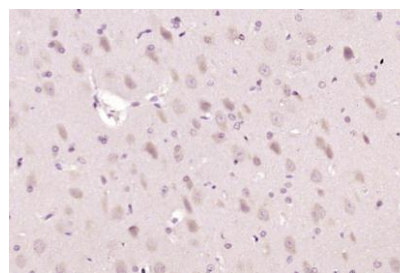
Storage&Stability:

Store at 4 °C short term. Aliquot and store at -20 °C long term. Avoid freeze-thaw cycles.

Specificity:

C1QL1 Polyclonal Antibody detects endogenous levels of C1QL1 protein.

DATA:



Paraformaldehyde-fixed, paraffin embedded (rat brain); Antigen retrieval by boiling in sodium citrate buffer (pH6.0) for 15min; Block endogenous peroxidase by 3% hydrogen peroxide for 20 minutes; Blocking buffer (normal goat serum) at 37 °C for 30min; Antibody incubation with (C1QL1) Polyclonal Antibody, Unconjugated at 1:200 overnight at 4 °C

Note:

For research use only, not for use in diagnostic procedure.

Bioworld Technology, Inc.

Add: 1660 South Highway 100, Suite 500 St. Louis Park, MN 55416, USA.

Email: info@bioworld.com

Tel: 6123263284

Fax: 6122933841

Bioworld technology, co. Ltd.

Add: No 9, weidi road Qixia District Nanjing, 210046, P. R. China.

Email: info@biogot.com

Tel: 0086-025-68037686

Fax: 0086-025-68035151