

ERK1 Polyclonal Antibody

Catalog: BS65641

Host: Rabbit

Reactivity: Human, Mouse, Rat,

BackGround:

The protein encoded by this gene is a member of the MAP kinase family. MAP kinases, also known as extra-cellular signal-regulated kinases (ERKs), act in a signaling cascade that regulates various cellular processes such as proliferation, differentiation, and cell cycle progression in response to a variety of extracellular signals. This kinase is activated by upstream kinases, resulting in its translocation to the nucleus where it phosphorylates nuclear targets. Alternatively spliced transcript variants encoding different protein isoforms have been described. [provided by RefSeq, Jul 2008]

Product:

0.01M TBS(pH7.4) with 1% BSA, 0.03% Proclin300 and 50% Glycerol.

Molecular Weight:

43kD

Swiss-Prot:

Q63844

Purification&Purity:

affinity purified by Protein A

Applications:

ICC=1:100

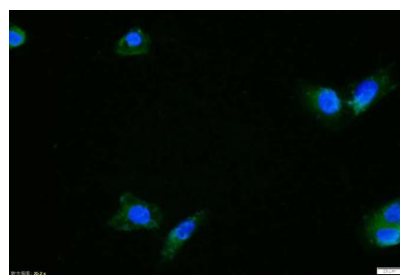
Storage&Stability:

Store at 4 °C short term. Aliquot and store at -20 °C long term. Avoid freeze-thaw cycles.

Specificity:

ERK1 Polyclonal Antibody detects endogenous levels of ERK1 protein.

DATA:



Tissue/cell: HeLa cell; 4% Paraformaldehyde-fixed; Triton X-100 at room temperature for 20 min; Blocking buffer (normal goat serum, C-0005) at 37 °C for 20 min; Antibody incubation with (ERK1) polyclonal Antibody, Unconjugated 1:100, 90 minutes at 37 °C; followed by a FITC conjugated Goat Anti-Rabbit IgG antibody at 37 °C for 90 minutes, DAPI (blue,) was used to stain the cell nuclei.

Note:

For research use only, not for use in diagnostic procedure.

Bioworld Technology, Inc.

Add: 1660 South Highway 100, Suite 500 St. Louis Park, MN 55416, USA.

Email: info@bioworld.com

Tel: 6123263284

Fax: 6122933841

Bioworld technology, co. Ltd.

Add: No 9, weidi road Qixia District Nanjing, 210046, P. R. China.

Email: info@biogot.com

Tel: 0086-025-68037686

Fax: 0086-025-68035151