

## BMAL1 Polyclonal Antibody

Catalog: BS65640	Host: Rabbit	Reactivity: Hu- man, Mouse, Rat, Dog, Pig, Cow, Horse, Sheep,
------------------	--------------	------------------------------------------------------------------

### BackGround:

Component of the circadian clock oscillator which includes the CRY proteins, CLOCK or NPAS2, ARNTL or ARNTL2, CSNK1D and/or CSNK1E, TIMELESS and the PER proteins. Efficient DNA binding requires dimerization with another bHLH protein. Heterodimerization with CLOCK is required for E-box-dependent transactivation, for CLOCK nuclear translocation and degradation, and, for phosphorylation of both CLOCK and ARNTL. Interaction with PER and CRY proteins requires translocation to the nucleus. Interaction of the CLOCK-ARNTL heterodimer with PER or CRY inhibits transcription activation. Interacts with HSP90; with AHR in vitro, but not in vivo.

### Product:

0.01M TBS(pH7.4) with 1% BSA, 0.03% Proclin300 and 50% Glycerol.

### Molecular Weight:

69kD

### Swiss-Prot:

O00327

### Purification&Purity:

affinity purified by Protein A

### Applications:

IHC-P=1:100-500

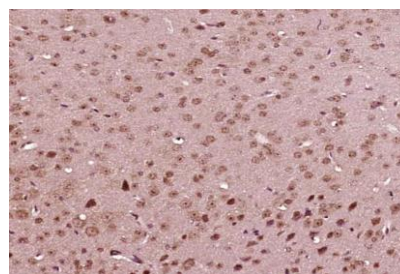
### Storage&Stability:

Store at 4 °C short term. Aliquot and store at -20 °C long term. Avoid freeze-thaw cycles.

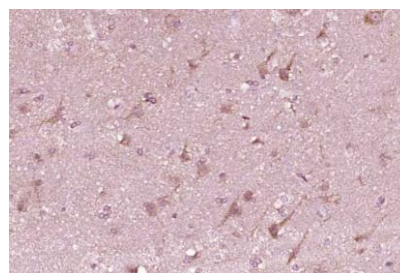
### Specificity:

BMAL1 Polyclonal Antibody detects endogenous levels of BMAL1 protein.

### DATA:



Paraformaldehyde-fixed, paraffin embedded (Mouse brain); Antigen retrieval by boiling in sodium citrate buffer (pH6.0) for 15min; Block endogenous peroxidase by 3% hydrogen peroxide for 20 minutes; Blocking buffer (normal goat serum) at 37 °C for 30min; Antibody incubation with (BMAL1) Polyclonal Antibody, Unconjugated at 1:400 overnight at 4 °C



Paraformaldehyde-fixed, paraffin embedded (Human brain glioma); Antigen retrieval by boiling in sodium citrate buffer (pH6.0) for 15min; Block endogenous peroxidase by 3% hydrogen peroxide for 20 minutes; Blocking buffer (normal goat serum) at 37 °C for 30min; Antibody incubation with (BMAL1) Polyclonal Antibody, Unconjugated at 1:400 overnight at 4 °C

### Note:

For research use only, not for use in diagnostic procedure.

### Bioworld Technology, Inc.

Add: 1660 South Highway 100, Suite 500 St. Louis Park, MN 55416, USA.  
Email: [info@bioworld.com](mailto:info@bioworld.com)  
Tel: 6123263284  
Fax: 6122933841

### Bioworld technology, co. Ltd.

Add: No 9, weidi road Qixia District Nanjing, 210046, P. R. China.  
Email: [info@biogot.com](mailto:info@biogot.com)  
Tel: 0086-025-68037686  
Fax: 0086-025-68035151