

SUR1 Polyclonal Antibody

Catalog: BS65637	Host: Rabbit	Reactivity: Hu- man, Mouse, Rat, Dog, Pig, Horse, Guinea Pig,
------------------	--------------	---------------------------------------------------------------------

BackGround:

SUR1 is a member of ATP binding cassette super family. SUR receptor confers the sensitivity of Kir6.2 to ATP/ADP sensitivity and to pharmacological agents such as sulfonylurea and diazoxide that close or open the KATP channels. The persistent hyperinsulinemic hypoglycemia in infancy (PHHI) is familial disorder due to defect in negative feed back in response to low glucose levels. SUR1 was mapped on chromosome 11p14-15.1, the same location where the gene for PHHI is located. It has been shown that the expression of Kir6.2 and SUR1 are regulated by glucose levels and the actives of glucagon like peptide receptor 1. Abnormal insulin secretion in PHHI appears to be caused by mutations in the SUR gene.

Product:

0.01M TBS(pH7.4) with 1% BSA, 0.03% Proclin300 and 50% Glycerol.

Molecular Weight:

175 kD

Swiss-Prot:

Q09428

Purification&Purity:

affinity purified by Protein A

Applications:

WB=1:500-2000

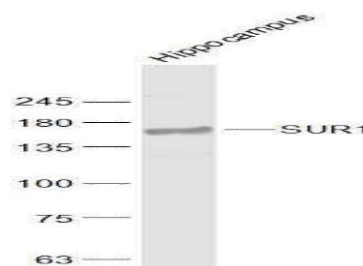
Storage&Stability:

Store at 4 °C short term. Aliquot and store at -20 °C long term. Avoid freeze-thaw cycles.

Specificity:

SUR1 Polyclonal Antibody detects endogenous levels of SUR1 protein.

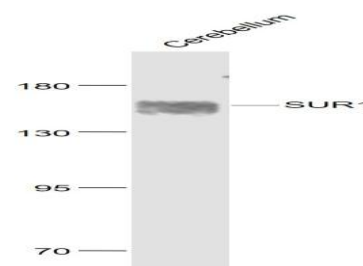
DATA:



Sample:

Hippocampus (Mouse) Lysate at 40 ug

Primary: Anti-SUR1 at 1/1000 dilution



Sample:

Cerebellum (Mouse) Lysate at 40 ug

Primary: Anti- SUR1 at 1/1000 dilution

Note:

For research use only, not for use in diagnostic procedure.

Bioworld Technology, Inc.

Add: 1660 South Highway 100, Suite 500 St. Louis Park, MN 55416, USA.

Email: info@bioworld.com

Tel: 6123263284

Fax: 6122933841

Bioworld technology, co. Ltd.

Add: No 9, weidi road Qixia District Nanjing, 210046, P. R. China.

Email: info@biogot.com

Tel: 0086-025-68037686

Fax: 0086-025-68035151