

## Phospho-PPIG (Ser376) Polyclonal Antibody

Catalog: BS65631	Host: Rabbit	Reactivity: Hu- man, Mouse, Rat, Chicken, Dog, Pig, Cow, Horse, Sheep,
------------------	--------------	---

### BackGround:

PPIG belongs to the the peptidyl-prolyl cis/trans isomerase protein family (PPIases). PPIases accelerate the folding of proteins. PPIG catalyzes the cis-trans isomerization of proline imidic peptide bonds in oligopeptides and is implicated in the folding, transport, and assembly of proteins. It is distributed in nuclear speckles, a nuclear compartment rich in splicing factors, and colocalizes with the splicing factors SC35 and pinin, suggesting a role in the regulation of pre-mRNA splicing.

### Product:

0.01M TBS(pH7.4) with 1% BSA, 0.03% Proclin300 and 50% Glycerol.

### Molecular Weight:

110 kD

### Swiss-Prot:

Q13427

### Purification&Purity:

affinity purified by Protein A

### Applications:

WB=1:500-2000

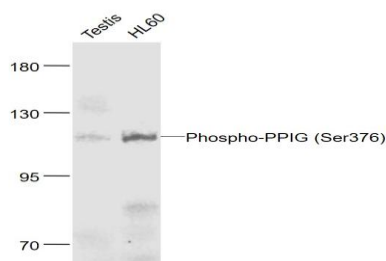
### Storage&Stability:

Store at 4 °C short term. Aliquot and store at -20 °C long term. Avoid freeze-thaw cycles.

### Specificity:

Phospho-PPIG (Ser376) Polyclonal Antibody detects endogenous levels of Phospho-PPIG protein only when phosphorylated at Ser376

### DATA:



### Sample:

Testis (Mouse) Lysate at 40 ug

HL60(Human) Cell Lysate at 30 ug

Primary: Anti-Phospho-PPIG (Ser376) at 1/1000 dilution

### Note:

For research use only, not for use in diagnostic procedure.

### Bioworld Technology, Inc.

Add: 1660 South Highway 100, Suite 500 St. Louis Park, MN 55416, USA.

Email: [info@bioworld.com](mailto:info@bioworld.com)

Tel: 6123263284

Fax: 6122933841

### Bioworld technology, co. Ltd.

Add: No 9, weidi road Qixia District Nanjing, 210046, P. R. China.

Email: [info@biogot.com](mailto:info@biogot.com)

Tel: 0086-025-68037686

Fax: 0086-025-68035151