

## MCP1 Polyclonal Antibody

Catalog: BS65630

Host: Rabbit

Reactivity: Mouse, Rat

### BackGround:

Chemotactic factor that attracts monocytes and basophils but not neutrophils or eosinophils. Augments monocyte anti-tumor activity. Has been implicated in the pathogenesis of diseases characterized by monocytic infiltrates, like psoriasis, rheumatoid arthritis or atherosclerosis. May be involved in the recruitment of monocytes into the arterial wall during the disease process of atherosclerosis. Monomer or homodimer; in equilibrium. Binds to CCR2 and CCR4. Is tethered on endothelial cells by glycosaminoglycan (GAG) side chains of proteoglycans. Processing at the N-terminus can regulate receptor and target cell selectivity. Deletion of the N-terminal residue converts it from an activator of basophil to an eosinophil chemoattractant. Genetic variations in CCL2 determine Mycobacterium tuberculosis susceptibility. Belongs to the intercrine beta (chemokine CC) family. The MCP-1 (the monocyte chemotactic protein1) has many pits that regulate the function toward sex to turn to record the factor, it can induce to have relation with inflammation with the immunity various genes turn to record. The immunity MCP-1 set turns the male signal to mainly locate the afterbirth syrup inside.

### Product:

0.01M TBS(pH7.4) with 1% BSA, 0.03% Proclin300 and 50% Glycerol.

### Molecular Weight:

11 kD

### Swiss-Prot:

P13500

### Purification&Purity:

affinity purified by Protein A

### Applications:

WB=1:500-2000

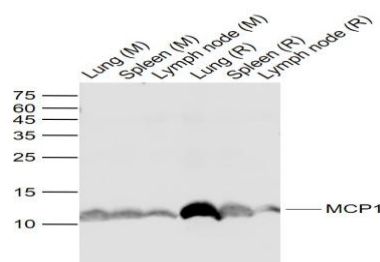
### Storage&Stability:

Store at 4 °C short term. Aliquot and store at -20 °C long term. Avoid freeze-thaw cycles.

### Specificity:

MCP1 Polyclonal Antibody detects endogenous levels of MCP1 protein.

### DATA:



Sample:

Lane 1: Lung (Mouse) Lysate at 40 ug

Lane 2: Spleen (Mouse) Lysate at 40 ug

Lane 3: Lymph node (Mouse) Lysate at 40 ug

Lane 4: Lung (Rat) Lysate at 40 ug

Lane 5: Spleen (Rat) Lysate at 40 ug

Lane 6: Lymph node (Rat) Lysate at 40 ug

Primary: Anti-MCP1 at 1/1000 dilution

### Note:

For research use only, not for use in diagnostic procedure.

### Bioworld Technology, Inc.

Add: 1660 South Highway 100, Suite 500 St. Louis Park, MN 55416, USA.

Email: [info@bioworld.com](mailto:info@bioworld.com)

Tel: 6123263284

Fax: 6122933841

### Bioworld technology, co. Ltd.

Add: No 9, weidi road Qixia District Nanjing, 210046, P. R. China.

Email: [info@biogot.com](mailto:info@biogot.com)

Tel: 0086-025-68037686

Fax: 0086-025-68035151