

## Alpha-ENaC Polyclonal Antibody

Catalog: BS65617	Host: Rabbit	Reactivity: Hu- man, Mouse, Rat, Dog, Pig, Cow, Horse, Sheep,
------------------	--------------	--

### BackGround:

Sodium permeable non-voltage-sensitive ion channel inhibited by the diuretic amiloride. Mediates the electrodiffusion of the luminal sodium (and water, which follows osmotically) through the apical membrane of epithelial cells. Controls the reabsorption of sodium in kidney, colon, lung and sweat glands. Also plays a role in taste perception.

### Product:

0.01M TBS(pH7.4) with 1% BSA, 0.03% Proclin300 and 50% Glycerol.

### Molecular Weight:

77 kD

### Swiss-Prot:

P37088

### Purification&Purity:

affinity purified by Protein A

### Applications:

WB=1:500-2000

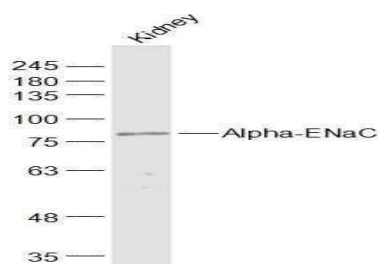
### Storage&Stability:

Store at 4 °C short term. Aliquot and store at -20 °C long term. Avoid freeze-thaw cycles.

### Specificity:

Alpha-ENaC Polyclonal Antibody detects endogenous levels of Alpha-ENaC protein.

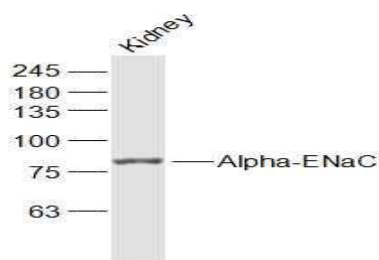
### DATA:



Sample:

Kidney (Rat) Lysate at 40 ug

Primary: Anti-Alpha-ENaC at 1/1000 dilution



Sample:

Kidney (Mouse) Lysate at 40 ug

Primary: Anti-Alpha-ENaC at 1/1000 dilution

### Note:

For research use only, not for use in diagnostic procedure.

### Bioworld Technology, Inc.

Add: 1660 South Highway 100, Suite 500 St. Louis Park, MN 55416, USA.

Email: [info@bioworld.com](mailto:info@bioworld.com)

Tel: 6123263284

Fax: 6122933841

### Bioworld technology, co. Ltd.

Add: No 9, weidi road Qixia District Nanjing, 210046, P. R. China.

Email: [info@biogot.com](mailto:info@biogot.com)

Tel: 0086-025-68037686

Fax: 0086-025-68035151