

## KLF2 Polyclonal Antibody

Catalog: BS65614	Host: Rabbit	Reactivity: Hu- man, Mouse, Rat, Pig, Cow, Horse, Rabbit, Sheep,
------------------	--------------	--

### BackGround:

Kruppel-like factors (KLFs) are a family of broadly expressed zinc finger transcription factors. KLF2 regulates T-cell trafficking by promoting expression of the lipid-binding receptor S1P1 (S1PR1; MIM 601974) and the selectin CD62L (SELL; MIM 153240) (summary by Weinreich et al., 2009 [PubMed 19592277]).[supplied by OMIM, Feb 2011]

### Product:

0.01M TBS(pH7.4) with 1% BSA, 0.03% Proclin300 and 50% Glycerol.

### Molecular Weight:

37kD

### Swiss-Prot:

Q9Y5W3

### Purification&Purity:

affinity purified by Protein A

### Applications:

ICC=1:100

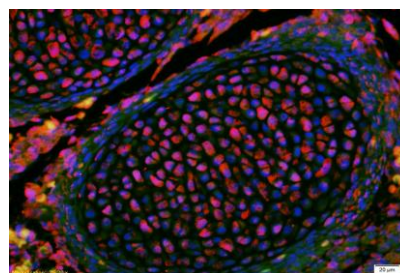
### Storage&Stability:

Store at 4 °C short term. Aliquot and store at -20 °C long term. Avoid freeze-thaw cycles.

### Specificity:

KLF2 Polyclonal Antibody detects endogenous levels of KLF2 protein.

### DATA:



Tissue/cell: Mouse embryos; 4% Paraformaldehyde-fixed and paraffin-embedded;

Antigen retrieval: citrate buffer (0.01M, pH 6.0), Boiling bathing for 15min; Blocking buffer (normal goat serum, C-0005) at 37 °C for 20 min;

Incubation: Anti-KLF2 Polyclonal Antibody, Unconjugated 1:200, overnight at 4 °C; The secondary antibody was Goat Anti-Rabbit IgG, Cy3 conjugated used at 1:200 dilution for 40 minutes at 37 °C.

DAPI (5 µg/ml, blue,) was used to stain the cell nuclei

### Note:

For research use only, not for use in diagnostic procedure.

### Bioworld Technology, Inc.

Add: 1660 South Highway 100, Suite 500 St. Louis Park, MN 55416, USA.

Email: [info@bioworld.com](mailto:info@bioworld.com)

Tel: 6123263284

Fax: 6122933841

### Bioworld technology, co. Ltd.

Add: No 9, weidi road Qixia District Nanjing, 210046, P. R. China.

Email: [info@biogot.com](mailto:info@biogot.com)

Tel: 0086-025-68037686

Fax: 0086-025-68035151