

MyoD1/Myf3 Polyclonal Antibody

Catalog: BS65602	Host: Rabbit	Reactivity: Human, Mouse, Rat, (predicted: Chick-en, Dog, Pig, Cow, Horse, Rabbit, Sheep,)
------------------	--------------	---

BackGround:

This gene encodes a nuclear protein that belongs to the basic helix-loop-helix family of transcription factors and the myogenic factors subfamily. It regulates muscle cell differentiation by inducing cell cycle arrest, a prerequisite for myogenic initiation. The protein is also involved in muscle regeneration. It activates its own transcription which may stabilize commitment to myogenesis. [provided by RefSeq, Jul 2008]

Product:

0.01M TBS(pH7.4) with 1% BSA, 0.03% Proclin300 and 50% Glycerol.

Molecular Weight:

36 kD

Swiss-Prot:

P10085

Purification&Purity:

affinity purified by Protein A

Applications:

WB=1:500-2000

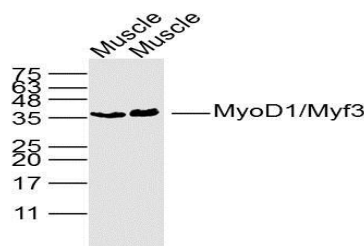
Storage&Stability:

Store at 4 °C short term. Aliquot and store at -20 °C long term. Avoid freeze-thaw cycles.

Specificity:

MyoD1/Myf3 Polyclonal Antibody detects endogenous levels of MyoD1/Myf3 protein.

DATA:



Sample: Muscle (Rat) Lysate at 40 ug Muscle (Mouse) Lysate at 40 ug

Primary: Anti- MyoD1/Myf3 (bs-2442R) at 1/300 dilution

Note:

For research use only, not for use in diagnostic procedure.

Bioworld Technology, Inc.

Add: 1660 South Highway 100, Suite 500 St. Louis Park, MN 55416, USA.

Email: info@bioworld.com

Tel: 6123263284

Fax: 6122933841

Bioworld technology, co. Ltd.

Add: No 9, weidi road Qixia District Nanjing, 210046, P. R. China.

Email: info@biogot.com

Tel: 0086-025-68037686

Fax: 0086-025-68035151