

PRSS56 polyclonal antibody

Catalog: BS65594

Host: Rabbit

Reactivity: Mouse,

BackGround:

This gene encodes a protein that contains a peptidase S1 domain and possesses trypsin-like serine protease activity. The encoded protein may play a role in eye development, and mutations in this gene are a cause of autosomal recessive posterior microphthalmos. [provided by RefSeq, Dec 2011]

Product:

0.01M TBS(pH7.4) with 1% BSA, 0.03% Proclin300 and 50% Glycerol.

Molecular Weight:

~63kDa

Swiss-Prot:

F2YMG0

Purification&Purity:

affinity purified by Protein A

Applications:

WB=1:500-2000

not yet tested in other applications.

optimal dilutions/concentrations should be determined by the end user.

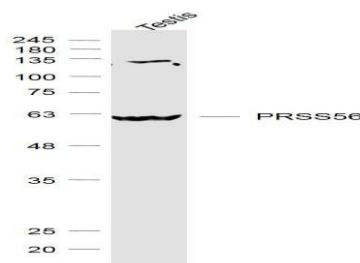
Storage&Stability:

Store at 4 °C short term. Aliquot and store at -20 °C long term. Avoid freeze-thaw cycles.

Specificity:

PRSS56 polyclonal Antibody detects endogenous levels of PRSS56 protein.

DATA:



Testis (Mouse) Lysate at 40 ug

Anti-PRSS56 at 1/1000 dilution

Note:

For research use only, not for use in diagnostic procedure.

Bioworld Technology, Inc.

Add: 1660 South Highway 100, Suite 500 St. Louis Park, MN 55416, USA.

Email: info@bioworld.com

Tel: 6123263284

Fax: 6122933841

Bioworld technology, co. Ltd.

Add: No 9, weidi road Qixia District Nanjing, 210046, P. R. China.

Email: info@biogot.com

Tel: 0086-025-68037686

Fax: 0086-025-68035151