

## TBX22 polyclonal antibody

Catalog: BS65590

Host: Rabbit

Reactivity: Mouse,

### BackGround:

This gene is a member of a phylogenetically conserved family of genes that share a common DNA-binding domain, the T-box. T-box genes encode transcription factors involved in the regulation of developmental processes. Mutations in this gene have been associated with the inherited X-linked disorder, Cleft palate with ankyloglossia, and it is believed to play a major role in human palatogenesis. Alternatively spliced transcript variants encoding different isoforms have been found for this gene. [provided by RefSeq, Jul 2008]

### Product:

0.01M TBS(pH7.4) with 1% BSA, 0.03% Proclin300 and 50% Glycerol.

### Molecular Weight:

~58kDa

### Swiss-Prot:

Q8K402

### Purification&Purity:

affinity purified by Protein A

### Applications:

WB=1:500-2000

not yet tested in other applications.

optimal dilutions/concentrations should be determined by

the end user.

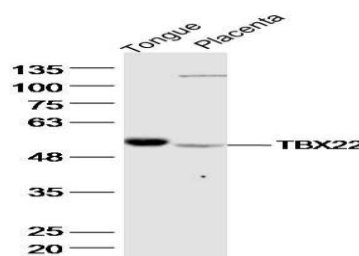
### Storage&Stability:

Store at 4 °C short term. Aliquot and store at -20 °C long term. Avoid freeze-thaw cycles.

### Specificity:

TBX22 polyclonal Antibody detects endogenous levels of TBX22 protein.

### DATA:



Tongue (Mouse) Lysate at 40 ug

Placenta (Mouse) Lysate at 40 ug

Primary: Anti-TBX22 at 1/300 dilution

### Note:

For research use only, not for use in diagnostic procedure.

### Bioworld Technology, Inc.

Add: 1660 South Highway 100, Suite 500 St. Louis Park, MN 55416, USA.

Email: [info@bioworld.com](mailto:info@bioworld.com)

Tel: 6123263284

Fax: 6122933841

### Bioworld technology, co. Ltd.

Add: No 9, weidi road Qixia District Nanjing, 210046, P. R. China.

Email: [info@biogot.com](mailto:info@biogot.com)

Tel: 0086-025-68037686

Fax: 0086-025-68035151