

## GPR43 polyclonal antibody

Catalog: BS65586

Host: Rabbit

Reactivity: Human, Mouse, Rat, Pig, Rabbit,

### BackGround:

G protein-coupled receptors provide attractive targets for drug therapy due to the sheer size and diversity of ligands within this receptor family. G protein-coupled receptor (GPR) GPR41 and GPR43 are related members of a homologous family of orphan G protein-coupled receptors that are tandemly encoded at a single chromosomal locus in both humans and mice. GPR43 functions as a ligand for short chain fatty acids (SCFAs), notably acetate and propionate. Bacteria in the gut produce high concentrations of SCFAs, which are subsequently released in the bloodstream, where they exert cellular effects on blood leukocytes, including calcium release, ERK1/2 activation, and inhibition of cAMP accumulation. These effects indicate a role for GPR43 in the recruitment of leukocytes, particularly polymorphonuclear cells, to sites of bacterial infection.

### Product:

0.01M TBS(pH7.4) with 1% BSA, 0.03% Proclin300 and 50% Glycerol.

### Molecular Weight:

~43kDa

### Swiss-Prot:

O15552

### Purification&Purity:

affinity purified by Protein A

### Applications:

WB=1:500-2000

not yet tested in other applications.

optimal dilutions/concentrations should be determined by the end user.

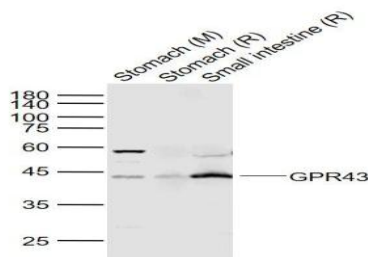
### Storage&Stability:

Store at 4 °C short term. Aliquot and store at -20 °C long term. Avoid freeze-thaw cycles.

### Specificity:

GPR43 polyclonal Antibody detects endogenous levels of GPR43 protein.

### DATA:



Anti-GPR43 at 1/1000 dilution

### Note:

For research use only, not for use in diagnostic procedure.

### Bioworld Technology, Inc.

Add: 1660 South Highway 100, Suite 500 St. Louis Park, MN 55416, USA.

Email: [info@bioworld.com](mailto:info@bioworld.com)

Tel: 6123263284

Fax: 6122933841

### Bioworld technology, co. Ltd.

Add: No 9, weidi road Qixia District Nanjing, 210046, P. R. China.

Email: [info@biogol.com](mailto:info@biogol.com)

Tel: 0086-025-68037686

Fax: 0086-025-68035151