

Cyclophilin B(Loading Control) monoclonal antibody

Catalog: BS65514

Host: Rabbit

Reactivity: Human, Mouse, Rat

BackGround:

The cyclophilins are a conserved class of proteins that bind the immunosuppressive drug cyclosporin A (CsA) with high affinity. CsA blocks helper T-cell activation at a step between T-cell receptor stimulation and the transcriptional activation of cytokine genes. Cyclophilins from many species possess peptidyl-prolyl cis-trans isomerase (PPIase) activity that is blocked by CsA and therefore may be relevant in CsA-mediated immunosuppression.

Product:

0.01M TBS(pH7.4) with 1% BSA, 0.03% Proclin300 and 50% Glycerol.

Molecular Weight:

~18kDa

Swiss-Prot:

P23284

Purification&Purity:

affinity purified by Protein A

Applications:

WB=1:500-2000

not yet tested in other applications.

optimal dilutions/concentrations should be determined by the end user.

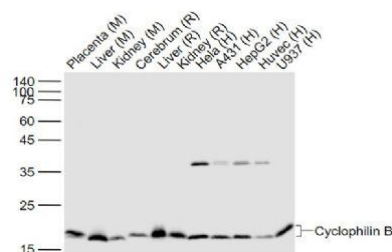
Storage&Stability:

Store at 4 °C short term. Aliquot and store at -20 °C long term. Avoid freeze-thaw cycles.

Specificity:

Cyclophilin B monoclonal Antibody detects endogenous levels of Cyclophilin B protein.

DATA:



Anti- Cyclophilin B at 1/1000 dilution

Note:

For research use only, not for use in diagnostic procedure.

Bioworld Technology, Inc.

Add: 1660 South Highway 100, Suite 500 St. Louis Park, MN 55416, USA.

Email: info@bioworld.com

Tel: 6123263284

Fax: 6122933841

Bioworld technology, co. Ltd.

Add: No 9, weidi road Qixia District Nanjing, 210046, P. R. China.

Email: info@biogot.com

Tel: 0086-025-68037686

Fax: 0086-025-68035151