

NeuN monoclonal antibody

Catalog: BS65511

Host: Rabbit

Reactivity: Mouse, Rat

BackGround:

Vertebrate neuron-specific nuclear protein called NeuN (Neuronal Nuclei) is an excellent marker for neurons in primary cultures and in retinoic acid-stimulated P19 cells. It is also useful for identifying neurons in transplants. NeuN is a neuron-specific, DNA-binding nuclear protein in vertebrates. In mice, NeuN is observed in most neuronal cell types throughout the nervous system, including cerebellum, cerebral cortex, hippocampus, thalamus and spinal cord, as well as the dorsal root ganglia, sympathetic chain ganglia and enteric ganglia of the peripheral nervous system. NeuN immunoreactivity is first observed in neurons when they become post-mitotic and are initiating cellular and morphological differentiation. No staining is observed in proliferative zones. NeuN has been used as an immunohistochemical marker for excitotoxic lesions of the brain as well as in the diagnosis of a wide range of human tissue specimens from the central and peripheral nervous systems.

Product:

0.01M TBS(pH7.4) with 1% BSA, 0.03% Proclin300 and 50% Glycerol.

Molecular Weight:

~46/50kDa

Swiss-Prot:

A6NFN3

Purification&Purity:

affinity purified by Protein A

Applications:

WB=1:500-2000

not yet tested in other applications.

optimal dilutions/concentrations should be determined by the end user.

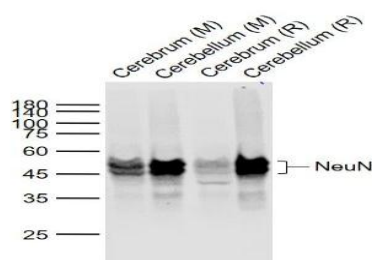
Storage&Stability:

Store at 4 °C short term. Aliquot and store at -20 °C long term. Avoid freeze-thaw cycles.

Specificity:

NeuN monoclonal Antibody detects endogenous levels of NeuN protein.

DATA:



Anti-NeuN at 1/1000 dilution

Note:

For research use only, not for use in diagnostic procedure.

Bioworld Technology, Inc.

Add: 1660 South Highway 100, Suite 500 St. Louis Park, MN 55416, USA.

Email: info@bioworld.com

Tel: 6123263284

Fax: 6122933841

Bioworld technology, co. Ltd.

Add: No 9, weidi road Qixia District Nanjing, 210046, P. R. China.

Email: info@biogot.com

Tel: 0086-025-68037686

Fax: 0086-025-68035151