

Phospho-YAP1 (Ser127) monoclonal antibody

Catalog: BS65509

Host: Rabbit

Reactivity: Human

BackGround:

This gene encodes the human ortholog of chicken YAP protein which binds to the SH3 domain of the Yes proto-oncogene product. This protein contains a WW domain that is found in various structural, regulatory and signaling molecules in yeast, nematode, and mammals, and may be involved in protein-protein interaction. [provided by RefSeq].

Product:

0.01M TBS(pH7.4) with 1% BSA, 0.03% Proclin300 and 50% Glycerol.

Molecular Weight:

~70kDa

Swiss-Prot:

P46937

Purification&Purity:

affinity purified by Protein A

Applications:

WB=1:500-1000 Flow-Cyt=2ug/Test

not yet tested in other applications.

optimal dilutions/concentrations should be determined by

the end user.

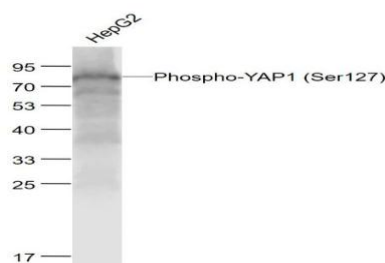
Storage&Stability:

Store at 4 °C short term. Aliquot and store at -20 °C long term. Avoid freeze-thaw cycles.

Specificity:

Phospho-YAP1 (Ser127) monoclonal antibody detects endogenous levels of YAP1 protein only when phosphorylated at Ser127.

DATA:



Anti-Phospho-YAP1 (Ser127) at 1/1000 dilution.

Note:

For research use only, not for use in diagnostic procedure.

Bioworld Technology, Inc.

Add: 1660 South Highway 100, Suite 500 St. Louis Park, MN 55416, USA.

Email: info@bioworld.com

Tel: 6123263284

Fax: 6122933841

Bioworld technology, co. Ltd.

Add: No 9, weidi road Qixia District Nanjing, 210046, P. R. China.

Email: info@biogot.com

Tel: 0086-025-68037686

Fax: 0086-025-68035151