

## HSV-Tag monoclonal antibody

Catalog: BS65486M

Host: Mouse

Reactivity: HSV-tagged proteins

### BackGround:

The HSV (herpes simplex virus) epitope tag is frequently engineered onto the N- or C- terminus of a protein of interest so that the tagged protein can be analyzed and visualized using immunochemical methods. The recognized HSV peptide epitope represents the amino acid sequence QPELAPEDPED. HSV Tag antibody can recognize C-terminal, internal, and N-terminal HSV-tagged proteins.

### Product:

0.01M TBS(pH7.4) with 1% BSA, 0.03% Proclin300 and 50% Glycerol.

### Molecular Weight:

N/A

### Swiss-Prot:

N/A

### Purification&Purity:

affinity purified by Protein G

### Applications:

WB=1:1000-5000

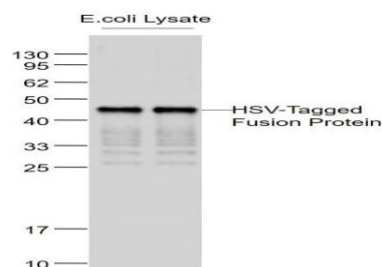
### Storage&Stability:

Store at 4 °C short term. Aliquot and store at -20 °C long term. Avoid freeze-thaw cycles.

### Specificity:

HSV-tag monoclonal antibody detects over-expressed or recombinant proteins containing the HSV epitope tag.

### DATA:



Primary: Anti-HSV tag at 1/1000 dilution

### Note:

For research use only, not for use in diagnostic procedure.

### Bioworld Technology, Inc.

Add: 1660 South Highway 100, Suite 500 St. Louis Park, MN 55416, USA.

Email: [info@bioworld.com](mailto:info@bioworld.com)

Tel: 6123263284

Fax: 6122933841

### Bioworld technology, co. Ltd.

Add: No 9, weidi road Qixia District Nanjing, 210046, P. R. China.

Email: [info@biogot.com](mailto:info@biogot.com)

Tel: 0086-025-68037686

Fax: 0086-025-68035151