

BTBD6 Polyclonal Antibody

Catalog: BS65417	Host: Rabbit	Reactivity: Hu- man, Mouse, Rat, Cow, Rabbit, Sheep,
------------------	--------------	---

BackGround:

The function of BTB/POZ domain containing protein 6 is not known. The BTB/POZ domain is an evolutionarily conserved protein-protein interaction domain often found in developmentally regulated transcription factors. Many additional conserved motifs have been found in association with BTB/POZ domain, including kelch repeats, zinc finger domains, FYVE fingers and ankyrin repeats. BTB/POZ domain containing protein 6 may be involved in neuronal development and muscle formation.

Product:

0.01M TBS(pH7.4) with 1% BSA, 0.03% Proclin300 and 50% Glycerol.

Molecular Weight:

53 kD

Swiss-Prot:

Q96KE9

Purification&Purity:

affinity purified by Protein A

Applications:

WB=1:500-2000

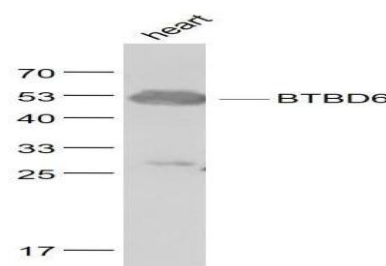
Storage&Stability:

Store at 4 °C short term. Aliquot and store at -20 °C long term. Avoid freeze-thaw cycles.

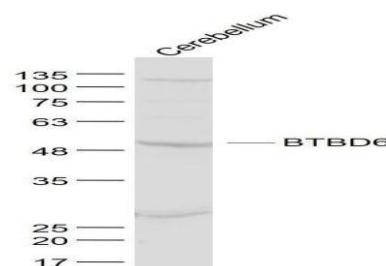
Specificity:

BTBD6 Polyclonal Antibody detects endogenous levels of BTBD6 protein.

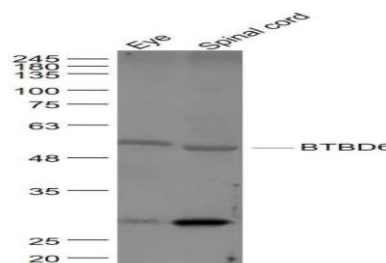
DATA:



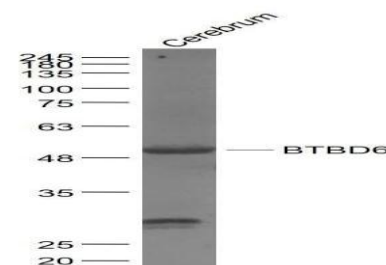
Primary: Anti- BTBD6 at 1/1000 dilution



Primary: Anti- BTBD6 at 1/1000 dilution



Primary: Anti- BTBD6 at 1/1000 dilution



Primary: Anti- BTBD6 at 1/1000 dilution

Note:

For research use only, not for use in diagnostic procedure.

Bioworld Technology, Inc.

Add: 1660 South Highway 100, Suite 500 St. Louis Park, MN 55416, USA.

Email: info@bioworld.com

Tel: 6123263284

Fax: 6122933841

Bioworld technology, co. Ltd.

Add: No 9, weidi road Qixia District Nanjing, 210046, P. R. China.

Email: info@biogot.com

Tel: 0086-025-68037686

Fax: 0086-025-68035151