

PC-PLD2 (phospho Tyr169) Polyclonal Antibody

Catalog: BS65372

Host: Rabbit

Reactivity: Human, Mouse, Rat

BackGround:

phospholipase D2(PLD2) Homo sapiens The protein encoded by this gene catalyzes the hydrolysis of phosphatidylcholine to phosphatidic acid and choline. The activity of the encoded enzyme is enhanced by phosphatidylinositol 4,5-bisphosphate and ADP-ribosylation factor-1. This protein localizes to the peripheral membrane and may be involved in cytoskeletal organization, cell cycle control, transcriptional regulation, and/or regulated secretion. Two transcript variants encoding different isoforms have been found for this gene.[provided by RefSeq, Jul 2011],

Product:

Liquid in PBS containing 50% glycerol, 0.5% BSA and 0.02% sodium azide.

Molecular Weight:

~95 kDa

Swiss-Prot:

O14939

Purification&Purity:

The antibody was affinity-purified from rabbit antiserum by affinity-chromatography using epitope-specific immunogen.

Applications:

Western Blot: 1/500 - 1/2000. Immunohistochemistry: 1/100 - 1/300. ELISA: 1/10000. Not yet tested in other applications.

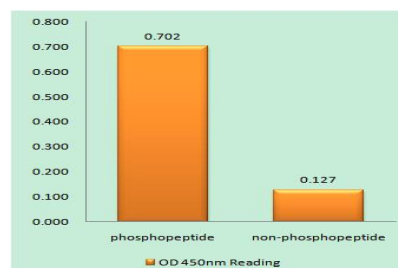
Storage&Stability:

Store at 4 °C short term. Aliquot and store at -20 °C long term. Avoid freeze-thaw cycles.

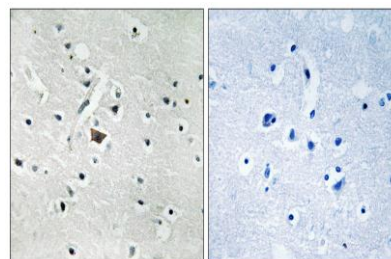
Specificity:

Phospho-PC-PLD2 (Y169) Polyclonal Antibody detects endogenous levels of PC-PLD2 protein only when phosphorylated at Y169.

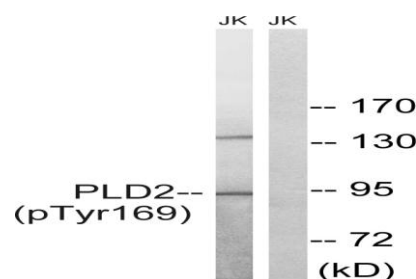
DATA:



Enzyme-Linked Immunosorbent Assay (Phospho-ELISA) for Immuno-Gen Phosphopeptide (Phospho-left) and Non-Phosphopeptide (Phospho-right), using PLD2 (Phospho-Tyr169) Antibody



Immunohistochemistry analysis of paraffin-embedded human brain, using PLD2 (Phospho-Tyr169) Antibody. The picture on the right is blocked with the phospho peptide.



Western blot analysis of lysates from Jurkat cells treated with TNF 20ng/ml 30', using PLD2 (Phospho-Tyr169) Antibody. The lane on the right is blocked with the phospho peptide.

Note:

For research use only, not for use in diagnostic procedure.

Bioworld Technology, Inc.

Add: 1660 South Highway 100, Suite 500 St. Louis Park, MN 55416, USA.

Email: info@bioworld.com

Tel: 6123263284

Fax: 6122933841

Bioworld technology, co. Ltd.

Add: No 9, weidi road Qixia District Nanjing, 210046, P. R. China.

Email: info@biogot.com

Tel: 0086-025-68037686

Fax: 0086-025-68035151