

## RGS16(Ab-168) polyclonal antibody

Catalog: BS65219

Host: Rabbit

Reactivity: Human

### BackGround:

regulator of G-protein signaling 16(RGS16) Homo sapiens The protein encoded by this gene belongs to the 'regulator of G protein signaling' family. It inhibits signal transduction by increasing the GTPase activity of G protein alpha subunits. It also may play a role in regulating the kinetics of signaling in the phototransduction cascade. [provided by RefSeq, Jul 2008],

### Product:

Liquid in PBS containing 50% glycerol, 0.5% BSA and 0.02% sodium azide.

### Molecular Weight:

~ 30 kDa

### Swiss-Prot:

O15492

### Purification&Purity:

The antibody was affinity-purified from rabbit antiserum by affinity-chromatography using epitope-specific immunogen.

### Applications:

Western Blot: 1/500 - 1/2000. ELISA: 1/10000. Not yet tested in other applications.

### Storage&Stability:

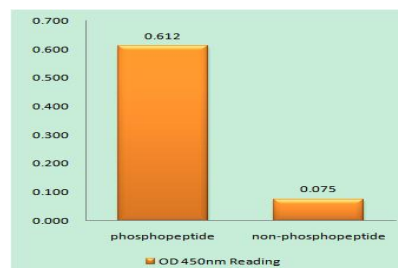
Store at 4 °C short term. Aliquot and store at -20 °C long term. Avoid freeze-thaw cycles.

### Specificity:

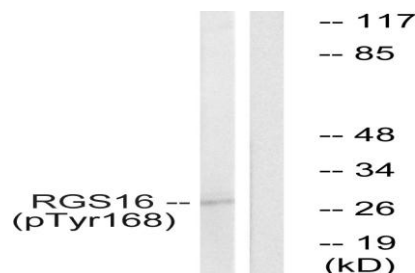
Phospho-RGS16 (Y168) Polyclonal Antibody detects endogenous levels of RGS16 protein only when phos-

phorylated at Y168.

### DATA:



Enzyme-Linked Immunosorbent Assay (Phospho-ELISA) for Immunogen Phosphopeptide (Phospho-left) and Non-Phosphopeptide (Phospho-right), using RGS16 (Phospho-Tyr168) Antibody



Western blot analysis of lysates from COS7 cells treated with heat shock, using RGS16 (Phospho-Tyr168) Antibody. The lane on the right is blocked with the phospho peptide.

### Note:

For

### Bioworld Technology, Inc.

Add: 1660 South Highway 100, Suite 500 St. Louis Park, MN 55416, USA.

Email: [info@bioworld.com](mailto:info@bioworld.com)

Tel: 6123263284

Fax: 6122933841

### Bioworld technology, co. Ltd.

Add: No 9, weidi road Qixia District Nanjing, 210046, P. R. China.

Email: [info@biogot.com](mailto:info@biogot.com)

Tel: 0086-025-68037686

Fax: 0086-025-68035151