

EIF1AY polyclonal antibody

Catalog: BS65205

Host: Rabbit

Reactivity: Human, Mouse, Rat

BackGround:

eukaryotic translation initiation factor 1A, Y-linked(EIF1AY) Homo sapiens This gene is located on the non-recombining region of the Y chromosome. It encodes a protein related to eukaryotic translation initiation factor 1A (EIF1A), which may function in stabilizing the binding of the initiator Met-tRNA to 40S ribosomal subunits. Alternative splicing results in multiple transcript variants. [provided by RefSeq, Jul 2013],

Product:

Liquid in PBS containing 50% glycerol, 0.5% BSA and 0.02% sodium azide.

Molecular Weight:

/

Swiss-Prot:

O14602

Purification&Purity:

The antibody was affinity-purified from rabbit antiserum by affinity-chromatography using epitope-specific immunogen.

Applications:

Immunohistochemistry: 1/100 - 1/300. ELISA: 1/40000. Not yet tested in other applications.

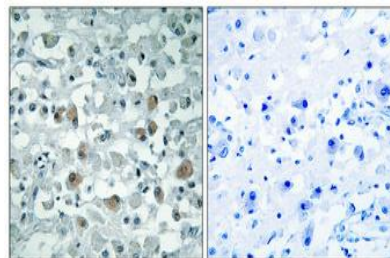
Storage&Stability:

-20 °C/1 year

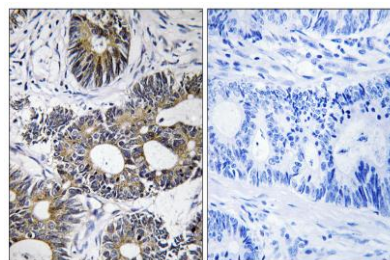
Specificity:

EIF1AY Polyclonal Antibody detects endogenous levels of EIF1AY protein.

DATA:



Immunohistochemical analysis of paraffin-embedded Human brain. Antibody was diluted at 1:100 (4 °overnight). High-pressure and temperature Tris-EDTA, pH 8.0 was used for antigen retrieval. Negative control (right) obtained from antibody was pre-absorbed by immunogen peptide.



Immunohistochemistry analysis of paraffin-embedded human colon carcinoma tissue, using EIF1AY Antibody. The picture on the right is blocked with the synthesized peptide.

Note:

For research use only, not for use in diagnostic procedure.

Bioworld Technology, Inc.

Add: 1660 South Highway 100, Suite 500 St. Louis Park, MN 55416, USA.

Email: info@bioworld.com

Tel: 6123263284

Fax: 6122933841

Bioworld technology, co. Ltd.

Add: No 9, weidi road Qixia District Nanjing, 210046, P. R. China.

Email: info@biogot.com

Tel: 0086-025-68037686

Fax: 0086-025-68035151