

EPHA8 (Phospho-Y615) polyclonal antibody

Catalog: BS64555

Host: Rabbit

Reactivity: Human,Mouse,Rat

BackGround:

Ephrin type-A receptor 8 is a protein that in humans is encoded by the EPHA8 gene. This gene encodes a member of the ephrin receptor subfamily of the protein-tyrosine kinase family. EPH and EPH-related receptors have been implicated in mediating developmental events, particularly in the nervous system.

Product:

Rabbit IgG, 1mg/ml in PBS with 0.02% sodium azide, 50% glycerol, pH7.2

Molecular Weight:

~ 125 kDa

Swiss-Prot:

P29322

Purification&Purity:

The antibody was affinity-purified from rabbit antiserum by affinity-chromatography using epitope-specific immunogen and the purity is > 95% (by SDS-PAGE).

Applications:

WB:1:500~1:1000

Storage&Stability:

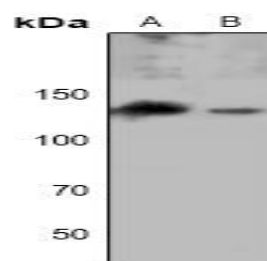
Store at 4 °C short term. Aliquot and store at -20 °C long

term. Avoid freeze-thaw cycles.

Specificity:

EPHA8 (Phospho-Y615) polyclonal antibody detects endogenous levels of EPHA8 protein only when phosphorylated at Tyr615.

DATA:



Western blot (WB) analysis of EPHA8 (Phospho-Y615) polyclonal antibody at 1:500 dilution

LaneA:NIH3T3 whole cell lysate

LaneB:H9C2 whole cell lysate

Note:

For research use only, not for use in diagnostic procedure.

Bioworld Technology, Inc.

Add: 1660 South Highway 100, Suite 500 St. Louis Park, MN 55416, USA.

Email: info@bioworld.com

Tel: 6123263284

Fax: 6122933841

Bioworld technology, co. Ltd.

Add: No 9, weidi road Qixia District Nanjing, 210046, P. R. China.

Email: info@biogol.com

Tel: 0086-025-68037686

Fax: 0086-025-68035151