

PINK1 (Phospho-S228) polyclonal antibody

Catalog: BS64545

Host: Rabbit

Reactivity: Human,Mouse,Rat

BackGround:

PTEN induced putative kinase 1, PINK1, is a mitochondrial serine/threonine kinase involved in the normal function and integrity of mitochondria, as well as in reduction of cytochrome c release from mitochondria. PINK1 phosphorylates Parkin and promotes its translocation to mitochondria. Research studies have shown that mutations in PINK1 are linked to autosomal recessive early onset Parkinson's disease, and are associated with loss of protective function, mitochondrial dysfunction, aggregation of α -synuclein, as well as proteasome dysfunction.

Product:

Rabbit IgG, 1mg/ml in PBS with 0.02% sodium azide, 50% glycerol, pH7.2

Molecular Weight:

~ 60 kDa

Swiss-Prot:

Q9BXM7

Purification&Purity:

The antibody was affinity-purified from rabbit antiserum by affinity-chromatography using epitope-specific immunogen and the purity is > 95% (by SDS-PAGE).

Applications:

WB:1:500~1:1000

Storage&Stability:

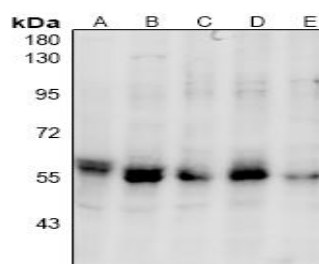
Store at 4 °C short term. Aliquot and store at -20 °C long

term. Avoid freeze-thaw cycles.

Specificity:

PINK1 (Phospho-S228) polyclonal antibody detects endogenous levels of PINK1 protein only when phosphorylated at Ser228.

DATA:



Western blot (WB) analysis of PINK1 (Phospho-S228) polyclonal antibody at 1:500 dilution

LaneA:The Testis tissue lysate of Mouse

LaneB:The Testis tissue lysate of Rat

LaneC:HEK293T whole cell lysate

LaneD:MCF-7 whole cell lysate

LaneE:U-87MG whole cell lysate

Note:

For research use only, not for use in diagnostic procedure.

Bioworld Technology, Inc.

Add: 1660 South Highway 100, Suite 500 St. Louis Park, MN 55416,USA.

Email: info@bioworld.com

Tel: 6123263284

Fax: 6122933841

Bioworld technology, co. Ltd.

Add: No 9, weidi road Qixia District Nanjing, 210046, P. R. China.

Email: info@biogot.com

Tel: 0086-025-68037686

Fax: 0086-025-68035151