

IGFBP3 (Phospho-S183) polyclonal antibody

Catalog: BS64535

Host: Rabbit

Reactivity: Human

BackGround:

Insulin like growth factor binding protein 3 (IGFBP3) is a member of the superfamily of insulin like growth factor (IGF) binding proteins which include six high affinity IGF binding proteins (IGFBP) and at least four low affinity binding proteins referred to as IGFBP related proteins (IGFBPrP). The IGFBP members are cysteine rich proteins with conserved cysteine residues clustered in the amino terminal and the carboxy terminal regions of the molecule. The cDNA sequence encoding the mature human IGFBP3 is fused to the signal peptide of CD33.

Product:

Rabbit IgG, 1mg/ml in PBS with 0.02% sodium azide, 50% glycerol, pH7.2

Molecular Weight:

~ 32 kDa

Swiss-Prot:

P17936

Purification&Purity:

The antibody was affinity-purified from rabbit antiserum by affinity-chromatography using epitope-specific immunogen and the purity is > 95% (by SDS-PAGE).

Applications:

WB:1:500~1:1000 IHC:1:50~1:200

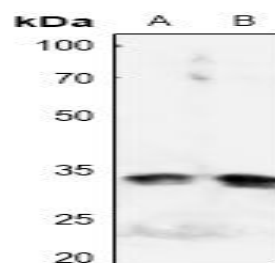
Storage&Stability:

Store at 4 °C short term. Aliquot and store at -20 °C long term. Avoid freeze-thaw cycles.

Specificity:

IGFBP3 (Phospho-S183) polyclonal antibody detects endogenous levels of IGFBP3 protein only when phosphorylated at Ser183.

DATA:



Western blot (WB) analysis of IGFBP3 (Phospho-S183) polyclonal antibody at 1:500 dilution

LaneA:Hela whole cell lysate

LaneB:HEK293T whole cell lysate

Note:

For research use only, not for use in diagnostic procedure.

Bioworld Technology, Inc.

Add: 1660 South Highway 100, Suite 500 St. Louis Park, MN 55416, USA.

Email: info@bioworld.com

Tel: 6123263284

Fax: 6122933841

Bioworld technology, co. Ltd.

Add: No 9, weidi road Qixia District Nanjing, 210046, P. R. China.

Email: info@biogot.com

Tel: 0086-025-68037686

Fax: 0086-025-68035151