



Cyclin H (Phospho-T315) polyclonal antibody

Catalog: BS64522

Host: Rabbit

Reactivity: Human, Mouse, Rat

BackGround:

Cyclin H belongs to the highly conserved cyclin family, and are regulators of CDK kinases. Different cyclins exhibit distinct expression and degradation patterns which contribute to the temporal coordination of each mitotic event. Cyclin H forms a complex with CDK7 kinase and ring finger protein MAT1. The kinase complex is able to phosphorylate CDK2 and CDC2 kinases, and thus functions as a CDK-activating kinase (CAK). Cyclin H and its kinase partner are components of TFIIH, as well as RNA polymerase II protein complexes.

Product:

Rabbit IgG, 1mg/ml in PBS with 0.02% sodium azide, 50% glycerol, pH7.2

Molecular Weight:

~ 37 kDa

Swiss-Prot:

P51946

Purification&Purity:

The antibody was affinity-purified from rabbit antiserum by affinity-chromatography using epitope-specific immunogen and the purity is > 95% (by SDS-PAGE).

Applications:

WB:1:500~1:1000 IHC:1:50~1:200

Storage&Stability:

Store at 4 °C short term. Aliquot and store at -20 °C long

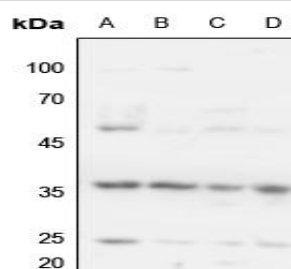
term. Avoid freeze-thaw cycles.

Specificity:

Cyclin H (Phospho-T315) polyclonal antibody detects endogenous levels of Cyclin

H protein only when phosphorylated at Thr315.

DATA:



Western blot (WB) analysis of Cyclin H (Phospho-T315) polyclonal antibody at 1:500 dilution

LaneA:Hela whole cell lysate

LaneB:H1688 whole cell lysate

LaneC:The Liver tissue lysate of Mouse

LaneD:The Liver tissue lysate of Rat

Note:

For research use only, not for use in diagnostic procedure.

Bioworld Technology, Inc.

Add: 1660 South Highway 100, Suite 500 St. Louis Park, MN 55416, USA.

Email: info@bioworld.com

Tel: 6123263284

Fax: 6122933841

Bioworld technology, co. Ltd.

Add: No 9, weidi road Qixia District Nanjing, 210046, P. R. China.

Email: info@biogot.com

Tel: 0086-025-68037686

Fax: 0086-025-68035151