

C/EBP epsilon (Phospho-T74) polyclonal antibody

Catalog: BS64519

Host: Rabbit

Reactivity: Human, Mouse, Rat

BackGround:

C/EBP α regulates gene expression in a variety of tissues including liver, adipose, lung and intestine. C/EBP α uses a bipartite structural motif to bind DNA. Two protein chains dimerize through a set of amphipathic α helices termed the leucine zipper. Highly basic polypeptide regions emerge from the zipper to form a linked set of DNA contact surfaces. C/EBP α appears to function exclusively in terminally-differentiated, growth-arrested cells. Additional family members include C/EBP β , C/EBP γ , C/EBP δ and C/EBP ϵ , all of which exhibit similar DNA-binding specificities and affinities to C/EBP α . Furthermore, C/EBP β and C/EBP δ readily form heterodimers both with each other as well as with C/EBP α .

Product:

Rabbit IgG, 1mg/ml in PBS with 0.02% sodium azide, 50% glycerol, pH7.2

Molecular Weight:

~ 34 kDa

Swiss-Prot:

Q15744

Purification&Purity:

The antibody was affinity-purified from rabbit antiserum by affinity-chromatography using epitope-specific immunogen and the purity is > 95% (by SDS-PAGE).

Applications:

WB:1:500~1:1000 IHC:1:50~1:200 IF:1:50~1:200

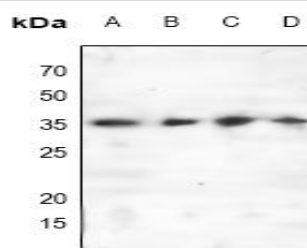
Storage&Stability:

Store at 4 °C short term. Aliquot and store at -20 °C long term. Avoid freeze-thaw cycles.

Specificity:

C/EBP epsilon (Phospho-T74) polyclonal antibody detects endogenous levels of C/EBP epsilon protein only when phosphorylated at Thr74.

DATA:



Western blot (WB) analysis of C/EBP epsilon (Phospho-T74) polyclonal antibody at 1:500 dilution

LaneA:Hela whole cell lysate

LaneB:The Liver tissue lysate of Rat

LaneC:Raw264.7 whole cell lysate

LaneD:The Liver tissue lysate of Rat

Note:

For research use only, not for use in diagnostic procedure.

Bioworld Technology, Inc.

Add: 1660 South Highway 100, Suite 500 St. Louis Park, MN 55416, USA.

Email: info@bioworld.com

Tel: 6123263284

Fax: 6122933841

Bioworld technology, co. Ltd.

Add: No 9, weidi road Qixia District Nanjing, 210046, P. R. China.

Email: info@biogot.com

Tel: 0086-025-68037686

Fax: 0086-025-68035151