

BMX (Phospho-Y566) polyclonal antibody

Catalog: BS64517

Host: Rabbit

Reactivity: Human, Mouse, Rat

BackGround:

ETK, also known as BMX, is a member of the Bruton's tyrosine kinase (Btk) family. It is expressed in a variety of hematopoietic, epithelial and endothelial cells. Etk, like other Btk family members, contains a pleckstrin homology (PH) domain and Src homology SH3 and SH2 domains. It participates in multiple signal transduction pathways. Phosphorylation of Tyr566 by Src kinase is required for activation of Etk in vivo. In endothelial and epithelial cells, Etk is regulated by FAK through phosphorylation at Tyr40.

Product:

Rabbit IgG, 1mg/ml in PBS with 0.02% sodium azide, 50% glycerol, pH7.2

Molecular Weight:

~ 78 kDa

Swiss-Prot:

P51813

Purification&Purity:

The antibody was affinity-purified from rabbit antiserum by affinity-chromatography using epitope-specific immunogen and the purity is > 95% (by SDS-PAGE).

Applications:

WB:1:500~1:1000 IHC:1:50~1:200 IF:1:50~1:200

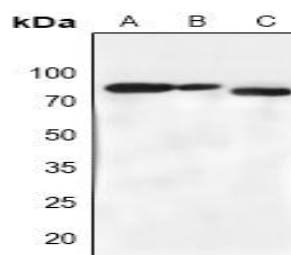
Storage&Stability:

Store at 4 °C short term. Aliquot and store at -20 °C long term. Avoid freeze-thaw cycles.

Specificity:

BMX (Phospho-Y566) polyclonal antibody detects endogenous levels of BMX protein only when phosphorylated at Tyr566.

DATA:



Western blot (WB) analysis of BMX (Phospho-Y566) polyclonal antibody at 1:500 dilution

LaneA:HEK293T whole cell lysate

LaneB:Hela whole cell lysate

LaneC:The Kidney tissue lysate of Mouse

Note:

For research use only, not for use in diagnostic procedure.

Bioworld Technology, Inc.

Add: 1660 South Highway 100, Suite 500 St. Louis Park, MN 55416, USA.

Email: info@bioworld.com

Tel: 6123263284

Fax: 6122933841

Bioworld technology, co. Ltd.

Add: No 9, weidi road Qixia District Nanjing, 210046, P. R. China.

Email: info@biogot.com

Tel: 0086-025-68037686

Fax: 0086-025-68035151