

## PKD1 (phospho-S205) polyclonal antibody

Catalog: BS64246

Host: Rabbit

Reactivity: Human,Rat,Mouse

### BackGround:

Activation of PKC is one of the earliest events in a cascade leading to a variety of cellular responses such as secretion, gene expression, proliferation and muscle contraction. Protein kinase D (PKD), also called PKC $\mu$ , is a serine/threonine kinase whose activation is dependent on the phosphorylation of two activation loop sites, Ser744 and Ser748, via a PKC-dependent signaling pathway. In addition to the two activation loop sites, the carboxy-terminal Ser916 has been identified as an auto-phosphorylation site for PKD/PKC $\mu$ . Phosphorylation at Ser916 correlates with PKD/PKC $\mu$  catalytic activity.

### Product:

1 mg/ml in Phosphate buffered saline (PBS) with 0.05% sodium azide, approx. pH 7.3.

### Molecular Weight:

~ 115 kDa

### Swiss-Prot:

Q15139

### Purification&Purity:

The antibody was affinity-purified from rabbit antiserum by affinity-chromatography using epitope-specific immunogen and the purity is > 95% (by SDS-PAGE).

### Applications:

WB: 1:500~1:1000

### Storage&Stability:

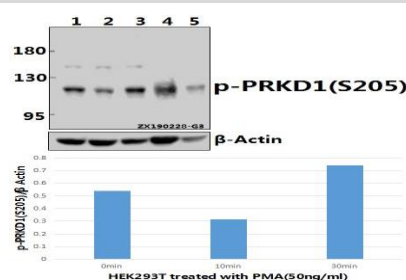
Store at 4 °C short term. Aliquot and store at -20 °C long

term. Avoid freeze-thaw cycles.

### Specificity:

PRKD1(Phospho-S205) polyclonal antibody detects endogenous levels of PRKD1 protein only when phosphorylated at Ser205.

### DATA:



Western blot (WB) analysis of PRKD1(Phospho-S205) polyclonal antibody at 1:500 dilution

Lane1:HEK293T whole cell lysate

Lane2:HEK293T treated with PMA(50ng/ml,10 minutes) whole cell lysate

Lane3:HEK293T treated with PMA(50ng/ml,30 minutes) whole cell lysate

Lane4:H9C2 whole cell lysate

Lane5:3T3-L1 whole cell lysate

### Note:

For research use only, not for use in diagnostic procedure.

### Bioworld Technology, Inc.

Add: 1660 South Highway 100, Suite 500 St. Louis Park, MN 55416,USA.

Email: [info@bioworld.com](mailto:info@bioworld.com)

Tel: 6123263284

Fax: 6122933841

### Bioworld technology, co. Ltd.

Add: No 9, weidi road Qixia District Nanjing, 210046, P. R. China.

Email: [info@biogot.com](mailto:info@biogot.com)

Tel: 0086-025-68037686

Fax: 0086-025-68035151