

## CtIP (phospho-S327) polyclonal antibody

Catalog: BS64001

Host: Rabbit

Reactivity: Human, Mouse

### BackGround:

CtBP1 is a cellular phosphoprotein that associates with various proteins and functions as a co-repressor of transcription. CtBP1 and the related protein CtBP2 are characterized as C-terminal binding protein of adenovirus E1A, and they preferentially associate with the E1A via a five amino acid motif, PLDLS, to repress E1A-induced oncogenesis and cellular transformation. CtBP1 is expressed from embryo to adult, but CtBP2 is mainly expressed during embryogenesis. During skeletal and T cell development, CtBP1 and CtBP2 associate with the PLDLSL domain of dEF1, a cellular zinc finger-homeodomain protein, and thereby enhance dEF1-induced transcriptional silencing. In addition, CtBP complexes with CtIP, a protein that recognizes distinctly different protein motifs from CtBP. CtIP binds to the BRCT repeats within the breast cancer gene BRCA1 and enables CtBP to influence BRCA1 activity. CtIP/CtBP binding to BRCA1 inhibits the transactivation of the p21 promoter, and it is critical for regulating p21 transcription in response to DNA damage.

### Product:

Rabbit IgG, 1mg/ml in PBS with 0.02% sodium azide, 50% glycerol, pH7.2

### Molecular Weight:

~ 110 kDa

### Swiss-Prot:

Q99708

### Purification&Purity:

The antibody was affinity-purified from rabbit antiserum by affinity-chromatography using epitope-specific immunogen and the purity is > 95% (by SDS-PAGE).

### Applications:

WB: 1:500~1:1000

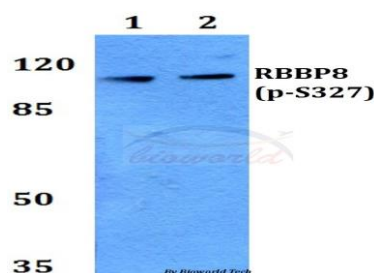
### Storage&Stability:

Store at 4 °C short term. Aliquot and store at -20 °C long term. Avoid freeze-thaw cycles.

### Specificity:

p-CtIP (S327) polyclonal antibody detects endogenous levels of CtIP protein only when phosphorylated at Ser327.

### DATA:



Western blot (WB) analysis of RBBP8(p-S327) polyclonal antibody at 1:500 dilution

Lane1:HEK293T cell lysate treated with UV(24h)

Lane2:Raw264.7 cell lysate treated with UV(24h)

### Note:

For research use only, not for use in diagnostic procedure.

### Bioworld Technology, Inc.

Add: 1660 South Highway 100, Suite 500 St. Louis Park, MN 55416, USA.

Email: [info@bioworld.com](mailto:info@bioworld.com)

Tel: 6123263284

Fax: 6122933841

### Bioworld technology, co. Ltd.

Add: No 9, weidi road Qixia District Nanjing, 210046, P. R. China.

Email: [info@biogot.com](mailto:info@biogot.com)

Tel: 0086-025-68037686

Fax: 0086-025-68035151