

ERK3 (phospho-S189) polyclonal antibody

Catalog: BS6377

Host: Rabbit

Reactivity: Human, Mouse, Rat

Background:

Mitogen-activated protein kinase (MAPK) signaling pathways involve closely related MAP kinases, including extracellular-signal-related kinase 3 (ERK 3, also designated PRKM6 and p97MAPK). Serum, growth factors and phorbol esters can initiate ERK 3 signaling pathways. Despite lacking a definitive nuclear localization sequence, ERK 3 constitutively localizes to the nucleus upon activation. p38 pathway activation-dependent upregulation of ERK 3 is independent of the status of p53, Bcl2 and caspase 3 during cell stress and damage induced by proteasome inhibition, suggesting ERK 3 in part mediates intracellular defense or cell rescue. The human ERK3 gene maps to chromosome 15q21 and encodes a 721 amino acid protein.

Product:

Rabbit IgG, 1mg/ml in PBS with 0.02% sodium azide, 50% glycerol, pH7.2

Molecular Weight:

~ 120 kDa

Swiss-Prot:

Q16659

Purification&Purity:

The antibody was affinity-purified from rabbit antiserum by affinity-chromatography using epitope-specific im-

munogen and the purity is > 95% (by SDS-PAGE).

Applications:

WB: 1:500~1:2000

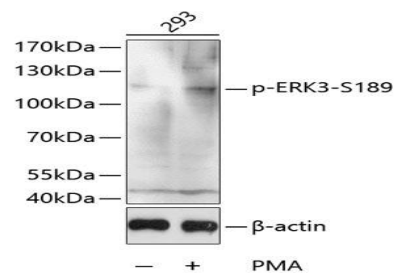
Storage&Stability:

Store at 4 °C short term. Aliquot and store at -20 °C long term. Avoid freeze-thaw cycles.

Specificity:

P-ERK3(S189) polyclonal antibody detects endogenous levels of ERK3 protein only when phosphorylated at Ser189.

DATA:



Western blot analysis of extracts of 293 cells, using Phospho-ERK3-S189 antibody.

Note:

For research use only, not for use in diagnostic procedure.

Bioworld Technology, Inc.

Add: 1660 South Highway 100, Suite 500 St. Louis Park, MN 55416, USA.

Email: info@bioworld.com

Tel: 6123263284

Fax: 6122933841

Bioworld technology, co. Ltd.

Add: No 9, weidi road Qixia District Nanjing, 210046, P. R. China.

Email: info@biogot.com

Tel: 0086-025-68037686

Fax: 0086-025-68035151