

## GPR113 polyclonal antibody

Catalog: BS62570

Host: Rabbit

Reactivity: Human, Mouse

### BackGround:

ADGRF3 (Adhesion G Protein-Coupled Receptor F3) is a Protein Coding gene. GO annotations related to this gene include G-protein coupled receptor activity and trans-membrane signaling receptor activity. An important paralog of this gene is ADGRG7. Orphan receptor.

### Product:

Rabbit IgG, 1mg/ml in PBS with 0.02% sodium azide, 50% glycerol, pH7.2

### Molecular Weight:

~ 93 kDa

### Swiss-Prot:

Q8IZF5

### Purification&Purity:

The antibody was affinity-purified from rabbit antiserum by affinity-chromatography using epitope-specific immunogen and the purity is > 95% (by SDS-PAGE).

### Applications:

WB:1:500~1:1000

### Storage&Stability:

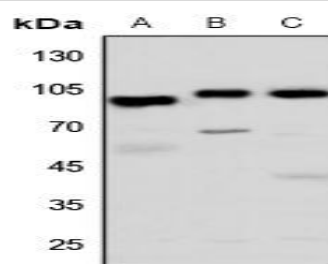
Store at 4 °C short term. Aliquot and store at -20 °C long

term. Avoid freeze-thaw cycles.

### Specificity:

GPR113 polyclonal antibody detects endogenous levels of GPR113 protein.

### DATA:



Western blot (WB) analysis of GPR113 polyclonal antibody at 1:500 dilution

LaneA:HEK293T whole cell lysate

LaneB:Hela whole cell lysate

LaneC:The Brain tissue lysate of Mouse

### Note:

For research use only, not for use in diagnostic procedure.

### Bioworld Technology, Inc.

Add: 1660 South Highway 100, Suite 500 St. Louis Park, MN 55416, USA.

Email: [info@bioworld.com](mailto:info@bioworld.com)

Tel: 6123263284

Fax: 6122933841

### Bioworld technology, co. Ltd.

Add: No 9, weidi road Qixia District Nanjing, 210046, P. R. China.

Email: [info@biogol.com](mailto:info@biogol.com)

Tel: 0086-025-68037686

Fax: 0086-025-68035151