

Granuphilin polyclonal antibody

Catalog: BS62493

Host: Rabbit

Reactivity: Human, Mouse, Rat

BackGround:

Granuphilin, also designated synaptotagmin-like protein 4 or exophilin 2, is a member of the synaptotagmin-like protein family. In rodents, two isoforms have been characterized as granuphilin-a and granuphilin-b, and alternative splicing in human has also been described. Granuphilin-b is a shorter isoform which contains a different C-terminal sequence than the longer isoform. Granuphilin is part of a ternary complex consisting of Syntaxin 1A (STX1A) and Rab 27A. The interaction between granuphilin and Syntaxin 1A on the plasma membrane is regulated by Rab 27A. Granuphilin is a peripheral membrane protein mainly expressed in pancreatic β -cells and in the pituitary gland. It has been detected on secretory granules and close to the plasma membrane. In the pancreas, granuphilin interacts with Insulin-containing vesicles while in both the pancreas and pituitary, granuphilin modulates the secretion of hormones and the exocytosis of dense-core granules. Overexpression of granuphilin enhances basal Insulin secretion but also inhibits high K^+ -induced Insulin secretion. The effect of granuphilin on Insulin secretion may be impaired by a mutation that disrupts the binding to either Rab 27A or Syntaxin 1A, making granuphilin a possible regulator in the exocytotic pathway

Product:

Rabbit IgG, 1mg/ml in PBS with 0.02% sodium azide, 50% glycerol, pH7.2

Molecular Weight:

~ 76 kDa

Swiss-Prot:

Q96C24

Purification&Purity:

The antibody was affinity-purified from rabbit antiserum by affinity-chromatography using epitope-specific immunogen and the purity is > 95% (by SDS-PAGE).

Applications:

WB:1:500~1:1000 IHC:1:50~1:200

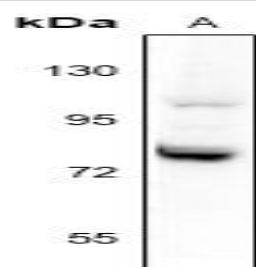
Storage&Stability:

Store at 4 °C short term. Aliquot and store at -20 °C long term. Avoid freeze-thaw cycles.

Specificity:

Granuphilin polyclonal antibody detects endogenous levels of Granuphilin protein.

DATA:



Western blot (WB) analysis of Granuphilin polyclonal antibody at 1:500 dilution

LaneA:CT26 whole cell lysate

Note:

For research use only, not for use in diagnostic procedure.

Bioworld Technology, Inc.

Add: 1660 South Highway 100, Suite 500 St. Louis Park, MN 55416, USA.

Email: info@bioworld.com

Tel: 6123263284

Fax: 6122933841

Bioworld technology, co. Ltd.

Add: No 9, weidi road Qixia District Nanjing, 210046, P. R. China.

Email: info@biogol.com

Tel: 0086-025-68037686

Fax: 0086-025-68035151