

LDLRAD2 polyclonal antibody

Catalog: BS62397

Host: Rabbit

Reactivity: Human,Rat,Mouse

BackGround:

LDLRAD2 belongs to the LDLR family. LDLR (low density lipoprotein receptor) is a member of the LDL receptor gene family and is involved in receptor-mediated endocytosis of specific ligands. The LDLR is a cell surface glycoprotein that scavenges LDL from the blood and regulates plasma LDL cholesterol. The cytoplasmic domain of the LDL receptor is necessary for the receptor to cluster in coated pits, which promotes the rapid endocytosis of bound LDL.

Product:

Rabbit IgG, 1mg/ml in PBS with 0.02% sodium azide, 50% glycerol, pH7.4.

Molecular Weight:

~ 29 kDa

Swiss-Prot:

Q5SZI1

Purification&Purity:

The protein was purified from E.coli and the purity is > 95% (by SDS-PAGE).

Applications:

WB:1:500~1:1000

Storage&Stability:

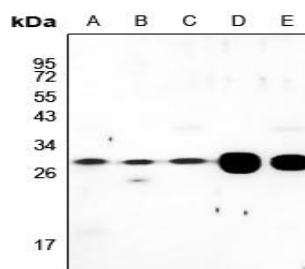
Store at 4 °C short term. Aliquot and store at -20 °C long

term. Avoid freeze-thaw cycles.

Specificity:

LDLRAD2 polyclonal antibody detects endogenous levels of LDLRAD2 protein.

DATA:



Western blot (WB) analysis of LDLRAD2 polyclonal antibody at 1:500 dilution

LaneA:HEK293T whole cell lysate

LaneB:HepG2 whole cell lysate

LaneC:MCF-7 whole cell lysate

LaneD:MEF whole cell lysate

LaneE:C6 whole cell lysate

Note:

For research use only, not for use in diagnostic procedure.

Bioworld Technology, Inc.

Add: 1660 South Highway 100, Suite 500 St. Louis Park, MN 55416,USA.

Email: info@bioworld.com

Tel: 6123263284

Fax: 6122933841

Bioworld technology, co. Ltd.

Add: No 9, weidi road Qixia District Nanjing, 210046, P. R. China.

Email: info@biogot.com

Tel: 0086-025-68037686

Fax: 0086-025-68035151