

## SIX1 polyclonal antibody

Catalog: BS62393

Host: Rabbit

Reactivity: Human,Rat,Mouse

### BackGround:

The Six proteins (sine oculis) are a family of homeodomain transcription factors that share a conserved DNA binding domain. Six2, Six4 (AREC3) and Six5 bind to the same DNA sequence, indicating that they may regulate the same target genes. Six1 and Six4 are both capable of transactivating MEF3 site containing reporter genes, such as myogenin. It has been demonstrated that alterations to homeobox-containing genes may result in cancer. Six1 expression has been shown to be absent or low in normal adult tissues, although it is expressed in several tumor types, including breast carcinoma. Six1 overexpression has been shown to abrogate the G2 cell cycle checkpoint.

### Product:

Rabbit IgG, 1mg/ml in PBS with 0.02% sodium azide, 50% glycerol, pH7.4.

### Molecular Weight:

~ 43 kDa

### Swiss-Prot:

Q15475

### Purification&Purity:

The protein was purified from E.coli and the purity is > 95% (by SDS-PAGE).

### Applications:

WB:1:500~1:1000

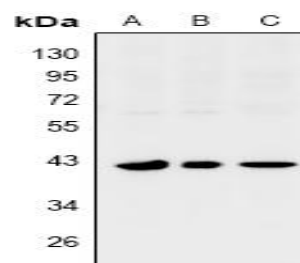
### Storage&Stability:

Store at 4 °C short term. Aliquot and store at -20 °C long term. Avoid freeze-thaw cycles.

### Specificity:

SIX1 polyclonal antibody detects endogenous levels of SIX1 protein.

### DATA:



Western blot (WB) analysis of SIX1 polyclonal antibody at 1:500 dilution

LaneA:PC12 whole cell lysate

LaneB:MEF whole cell lysate

LaneC:COS-7 whole cell lysate

### Note:

For research use only, not for use in diagnostic procedure.

### Bioworld Technology, Inc.

Add: 1660 South Highway 100, Suite 500 St. Louis Park, MN 55416,USA.

Email: [info@bioworld.com](mailto:info@bioworld.com)

Tel: 6123263284

Fax: 6122933841

### Bioworld technology, co. Ltd.

Add: No 9, weidi road Qixia District Nanjing, 210046, P. R. China.

Email: [info@biogol.com](mailto:info@biogol.com)

Tel: 0086-025-68037686

Fax: 0086-025-68035151